

WALTER PEAK

Wedding

GUIDE



Contents

INTRODUCTION	1	FOOD & BEVERAGE	11
THE LOCATION		Gourmet BBQ Menu	12
History	2	Canapés	13
Getting to Walter Peak	3	Shared Platter Menu	13
YOUR WEDDING		RATES & PACKAGES	15
Your Ceremony	5	TESTIMONIALS	19
Your Reception	6	FAQS	20
Your Venue	8	TERMS & CONDITIONS	22
Suggested Timeline	9	RECOMMENDED CONTRACTORS	23



An Idyllic Wedding Destination



Welcome, and congratulations on your engagement! We can't wait to help make your day everything you've dreamed of. From the moment you board the vintage steamship TSS Earnslaw for a romantic journey across Lake Wakatipu, to the moment you set foot back in Queenstown, everything about your wedding will be unforgettable.

Nestled on the western shores, Walter Peak High Country Farm has expansive lake and mountain views, exquisitely manicured gardens and rustic wooden jetties. With endless photo opportunities, the hardest part is deciding where you would like to hold the ceremony.

The historic Colonel's Homestead Restaurant has the charm and style of a nostalgic era with open fireplaces, chandeliers, and antique-filled rooms. It is perfect for receptions or pre/post wedding celebrations. Our menus offer a delicious array of locally sourced produce and high quality New Zealand wines to match.

The TSS Earnslaw and Walter Peak High Country Farm are steeped in Queenstown's pioneering history and together with unrivaled views, location, exceptional cuisine and dedicated service; we are the perfect choice for your big day.

**We look forward to talking to you
about your wedding soon.**

Walter Peak History



Walter Peak first became a high country sheep station in 1879. Scottish immigrant Hugh Mackenzie and his wife Anastasia along with six sons and two daughters, lived in Scholan house (the middle house at the back of the current homestead).

The sons all worked for a time at Walter Peak and helped plant the large block of trees that provide such a magnificent setting.

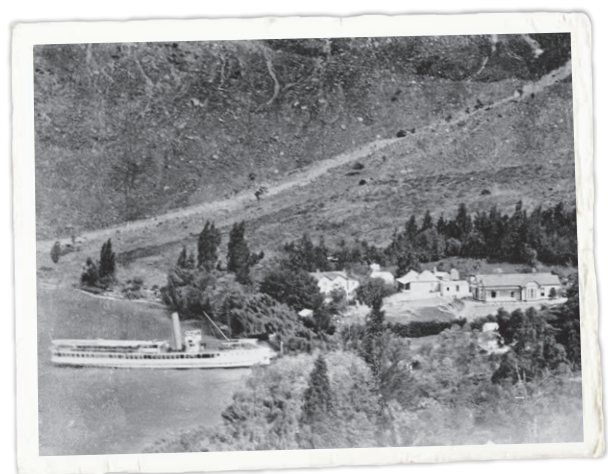
The original Colonel's Homestead was built in 1902 for one of the sons who became a Colonel in the First World War. He was the last MacKenzie to remain at Walter Peak; finally selling out in 1960 when his only son showed no interest in farming.

The homestead was first used to host visitors for morning and afternoon tea in 1969, when a launch arrived twice daily from Queenstown.

In 1977 the homestead was accidentally destroyed by fire. It was rebuilt with a very similar exterior but the interior was designed on a larger scale, with a variety of rooms suitable for entertaining.

Some items were rescued from the original house and other antiques were purchased from England and Scotland, in keeping with the character and period of the earlier homestead.

In the late 1960's Real Journeys bought the TSS Earnslaw and in 1999 the company took over Walter Peak High Country Farm. To date, Walter Peak High Country Farm has remained an iconic destination for visitors from all over the world.



Getting to Walter Peak



TSS Earnslaw Vintage Steamship

Launched the same year as the Titanic, the TSS Earnslaw was originally built to service the high country stations around Lake Wakatipu before there was road access. This beautiful old vessel remains in exceptional condition thanks to careful maintenance and the purity of the water of the lake.

The TSS Earnslaw is believed to be the only original coal-fired passenger carrying steamship still operating in the Southern Hemisphere. Guests are welcome to travel to Walter Peak on board any scheduled TSS Earnslaw departure and the private saloon can be used solely for wedding guests. Drinks and canapés can also be served on board.

Sailing times

From Queenstown to Walter Peak

10am, 12pm, 2pm, 4pm & 6pm

From Walter Peak to Queenstown

10.45am, 12.45pm, 2.45pm, 4.45pm, 6.45pm, 9.15pm & 11.15pm*

**Available for additional fee*

Alternative Travel Options

Charter Vessel

Real Journeys owns and operates a smaller vessel which is available to charter for groups of up to 65.



Planes & Helicopters

Walter Peak High Country Farm has its own landing strip for small planes and helicopters. Please ask us for air transfer pricing with suitable photo locations en route to Walter Peak.



Your Ceremony

From an intimate ceremony on board the TSS Earnslaw, to a large lakeside wedding; Walter Peak High Country Farm offers an array of stunning ceremony locations for your special day.



TSS Earnslaw Vintage Steamship

A ceremony on board this steamship is a classic choice for small intimate groups. Your ceremony may take place on the Promenade Deck, beside the grand piano, or outdoors on the forward deck.

In most cases ceremonies would be on a shared sailing although exclusive use options are available at certain times of the year.

Suitable for up to 50 guests.



The Lakefront

On the shores of Lake Wakatipu, your ceremony would take place in front of a breathtaking backdrop of the lake surrounded by mountains.

The most popular of our ceremony venues, this beautiful spot is private and provides perfect photo opportunities of gardens, lake and mountains.

Suitable for up to 100 guests.



The Lawn

Set amongst the flowers of a cottage garden, the lawn in front of the Colonel's Homestead is a large flat area with views from every angle.

The most popular of our ceremony venues, this beautiful spot is private, sheltered and provides perfect photo opportunities of gardens, lake or mountains.

Suitable for up to 200 guests.

Your Reception

The Colonel's Homestead Restaurant has a variety of elegant rooms that may be used separately or together to cater for wedding receptions, large or small.



The Mackenzie Room

Named after the Scottish immigrant family that established Walter Peak High Country Station in 1879, the Mackenzie room is our most intimate reception venue.

With views across the gardens and the lake, the room has its own separate entrance, private bathrooms and features two restored fireplaces and a romantic window seat.

Suitable for up to 50 guests.



The Long Room, Ballroom & Conservatory

On the west side of the Colonel's Homestead, these three lavish areas complement each other and form the perfect combination for a grand wedding with entertainment.

The Ballroom, at the heart of the Homestead features a large open fireplace, grand chandelier and country-style bar; all adding to its charm.

Dine, dance or simply enjoy the views, your guests will flow through the venue and mix and mingle with ease.

Suitable for up to 220 guests.



Exclusive use – the Colonel's Homestead Restaurant

For ultimate privacy, the entire Colonel's Homestead can be hired out exclusively ensuring the entire property is dedicated to your wedding reception.

This option is only available at certain times of the year and an additional surcharge may apply.

Suitable for up to 300 guests.

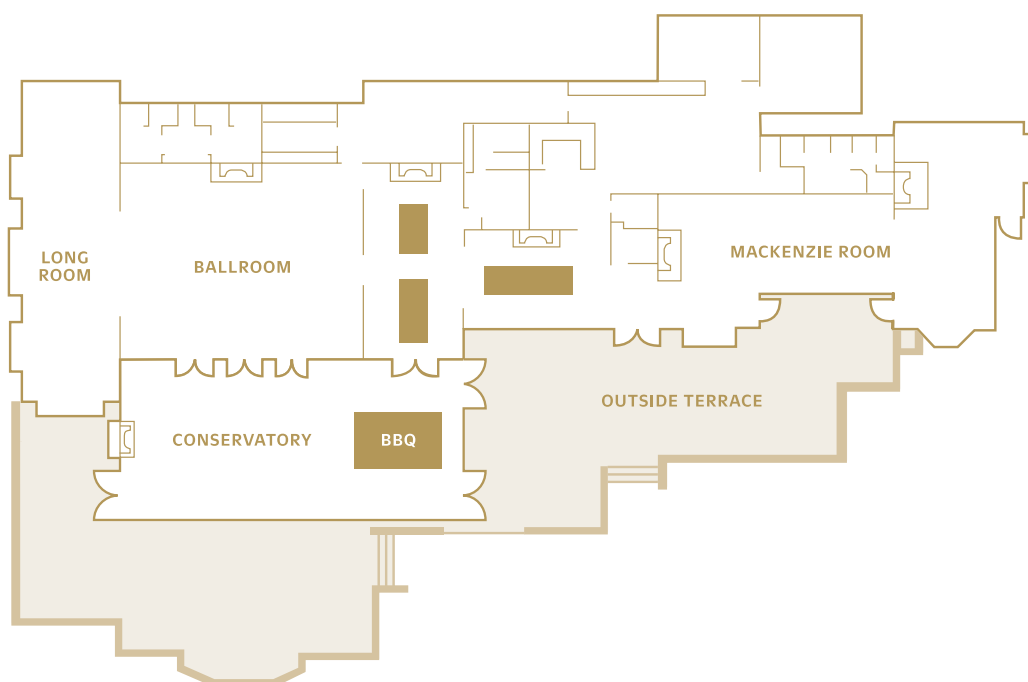




Your Venue



The Colonel's Homestead offers a variety of spaces, our team will help choose the perfect area to suit your requirements.



Suggested Wedding Day Timeline



Here is an example of a wedding ceremony and reception that features transport on the TSS Earnslaw's regular sailings.

Our team specialise in creating bespoke weddings and will work with you to tailor an itinerary that suits your requirements.

2.00pm	Groom and guests depart Steamer Wharf, Queenstown on board TSS Earnslaw
2.45pm	Guests arrive Walter Peak High Country Farm and are seated for ceremony
3.00pm	Bride arrives by helicopter / separate charter vessel
3.15pm	Ceremony begins
3.45pm	Ceremony concludes / drinks served
4.00pm	Canapés are served / photos
6.00pm	Guests move through to the Colonel's Homestead for reception dinner
6.05pm	Bride & groom arrive
6.10pm	Speeches
6.30pm	Dinner is served
9.15pm / 11.15pm*	TSS Earnslaw departs Walter Peak
10.00pm / 12.00am	TSS Earnslaw arrives Queenstown

**Optional late departure, additional fee.*





Food & Beverage

The Colonel's Homestead kitchen specialises in fresh, seasonal, locally sourced New Zealand produce. The menu is an important part of your special day. Our team of dedicated chefs are only too happy to cater to your unique requirements.

Our extensive wine list features a range of local and New Zealand wines designed to complement the menu. All inclusive beverage packages are available. Our wine list is regularly updated, so please contact us for a copy.

Sample menus

GOURMET BBQ DINNER

BREADS

Foccacia, rosemary and flaky sea salt

White poolish baguette

Wholemeal sourdough

SALADS & VEGETARIAN

Baby spinach, farro, dried cranberries, fennel seeds, baby silver beet, yuzu zests, sherry-vinegar dressing

Curious Cropper tomatoes, pomegranate, preserved garlic, basil leaves

Jersey benne potatoes, cucumber, pickled shitake mushroom, shallots, coconut dressing

Julie asparagus, preserved lemon, black sesame seeds, feta, toasted almonds, balsamic dressing

Courgette, parmesan, pine nuts, oregano, dried black olives, lemon dressing

Mixed beans, baba ganoush, harissa salsa

Roasted spring carrots, goat cheese curd, currants, Za'atar spices, coriander, orange blossom dressing

Iceberg lettuce wedges, crunchy peppers, pickled radishes, avocado & coriander dressing, mandarin picada

Orecchiette pasta, burrata, rocket leaves, snow peas, sundried tomato pesto

Kumara gnocchi, roasted summer vegetables, tomato fondue

Curious Cropper tomato medley, black garlic, crispy tofu, shiso cress

ANTIPASTI

New Zealand cheeses, spicy marinated mixed olives, semi dried tomatoes, artichoke in sunflower oil & herbs, pickled green pimento chilli, roasted red capsicum

VEGETABLES

Sweetcorn, smoked chipotle butter, coriander

New season potatoes, harissa salsa

Bok choy, edamame beans, broccolini, spring onion, confit garlic, miso dressing

OUTDOOR GRILL

Whole chicken

Cardrona Merino lamb

Canterbury pork

Southland beef

Zamora local sausages

DESSERTS

Walter Peak sticky date pudding

Ice-cream, sorbet

Mochaccino mousse

Citrus & vanilla pavlova, passionfruit cream, pistachio crumbs

Green apple cheesecake, cornflakes, cookies

Chocolate slice, pistachio, almonds

Sample menus

CANAPÉS

COLD

Curious Cropper tomatoes, black garlic, smoked ricotta cheese, sour dough bruschetta (V, NF)

Honeydew melon, vanilla pickled cucumber, mango & red chilli salsa (V, Vegan, DF, GF, NF)

Market fish ceviche tacos, BBQ corn & coriander salsa (DF, NF)

Mt. Cook salmon crudo, green pulses, seaweed, shallots, mirin dressing (GF, DF, NF)

Cured beef carpaccio, pickled shiitake mushroom, white radish, shiso cress, wafu sauce (DF, NF, GF)

Canterbury duck breast, Central Otago cherry & pinot noir chutney, beetroot, brioche crumble (NF)

Serrano ham, eggplant relish, bread chips (DF, NF)

WARM / HOT

Farinata, chickpea fritter, burrata, capers, raisins (V, NF, GF)

Gougeres, gruyere cheese, pickled apricot (NF, V)

Roasted peaches, goat cheese, walnuts, wild thyme, honey comb (V, GF)

Smoked warehouse fish cake, watercress puree (NF, DF)

Salted blue cod croquettes, lemon aioli (NF)

Crispy chicken, chipotle mayo (GF, DF, NF)

Pork belly steamed bun, sauerkraut (NF)

Merino lamb, pistachio nuts, dried fruit chutney, English muffin

SHARED PLATTERS

ENTRÉE (Choice of three)

Slow-cooked chicken breast, broad beans, baby cos salad, serrano ham, mandarin picada (DF, NF)

Miso cured Salmon, cauliflower cous cous, watercress sauce (GF, DF)

Potato ravioli, mussels, smoked cod, saffron emulsion (NF)

Burrata, charred seasonal vegetables, beetroot gel, almond & sumac (GF, V)

Curious Cropper tomato tart, onion jam, kalamata olives, basil puree (V, NF)

MAINS (Choice of three)

Merino lamb shoulder, honey roasted baby carrot, turnips, carrot & tandoori spice mousseline, coriander- infused lamb jus (GF, NF)

Wakanui beef bavette, parmesan & potato beignet, Cafe De Paris shaving, Walter Peak herb salad (NF)

Mt. Cook salmon, pea puree, sorrel & watercress salad, peanut horchata (GF)

Saffron & lemon risotto, smoked ricotta cheese, basil leaves (V, GF, NF)

DESSERT (Choice of one, plated)

Eton mess, strawberries, vanilla meringue, kirsch cream (GF, NF)

Chocolate tart, mascarpone & passion fruit cream, red berry sorbet (NF, V)

Lemon cremeux, pistachio sponge, lavender jelly, yogurt ice cream

Macadamia parfait, dark chocolate mousse, chocolate soil, orange gel, caramelised pop corn



Ceremony & Reception Package

One of the most important things when planning your wedding is the budget. With this in mind, we have prepared our pricing based on a per head package with options to add extra special touches.

Your wedding package includes the following:

- Return TSS Earnslaw cruise
- Wedding ceremony fee, Reception venue fee
- Canapés / Afternoon tea
- Cutting / service of wedding cake on shared platters
- Use of lawn following ceremony
- Bridal table, document signing table, tables, chairs (up to 40 for ceremony), cake table and gift table
- Table cloths and napkins (white or black), all cutlery, plates and glassware
- Cake and gift tables
- Wireless microphone, music connection for a cellphone

The TSS Earnslaw cruise included in the package is based on a 2.00pm departure from Queenstown and 9.15pm departure from Walter Peak. Later departure is possible for an additional charge. Packages are based on 20 – 200 people; for numbers above this, please contact us.

Choice of dining options:

	OFF PEAK	PEAK
Gourmet BBQ Dinner	\$235	\$295
Three Course Shared Platter	\$250	\$315

All prices are per person.

Off Peak: May – November. Peak: December – April.

Extra Special Touches

Arrival glass of bubbles on board TSS Earnslaw	\$12 pp
Standard Beverage Package – 1 Hour Two whites and one red wine, New Zealand beer, soft drinks & juice	\$45 pp
Premium Beverage Package – 1 Hour Three whites and one red wine, New Zealand & International beer, soft drinks & juice	\$55 pp
Wedding cake individually plated, served with cream	\$8 pp
Large wooden archway	\$300 flat fee
Chair covers for ceremony / reception	\$12 / chair
Chair covers with sash for ceremony / reception	\$16 / chair
Charter vessel transfer (<65 guests)	\$520 flat fee OFF PEAK \$650 flat fee PEAK
TSS Earnslaw late departure and extended venue hire (11.15pm from Walter Peak)	\$2,200 flat fee

All prices are in New Zealand dollars including 15% GST and are valid until 30 Sep 2022.

Ceremony Package



Your ceremony package includes the following:

- Complimentary glass of bubbles for each guest
- Your choice of canapes / afternoon tea
- Lakefront ceremony location, set up with up to 40 chairs & clothed signing table
- Return TSS Earnslaw Cruise

Pricing

\$170.00 PER ADULT

Extra special touches

Standard Beverage Package – 1 Hour \$45 pp
Two whites and one red wine,
New Zealand beer, soft drinks & juice

Premium Beverage Package – 1 Hour \$55 pp
Three whites and one red wine,
New Zealand & International beer,
soft drinks & juice

Wedding cake individually plated,
served with cream \$8pp

Large wooden archway \$300 flat fee

Chair covers for ceremony / reception \$12 per chair

Chair covers with sash for ceremony /
reception \$16 per chair

Charter vessel transfer (>65 guests) \$520 flat fee **OFF PEAK**
\$650 flat fee **PEAK**

*Package is for travel on any TSS Earnslaw scheduled service.
Package is based on 10 – 200.*

*All prices are in New Zealand dollars including 15% GST
and are valid until 30th September 2022*

*OFF PEAK May – October
PEAK November – April*

Reception Package

Your reception package includes the following:

- Return TSS Earnslaw Cruise
- Extended use of the allocated venue for pack in & pack out
- Tables, chairs, cutlery, crockery, glassware
- Cake table & cake service
- Table linen
- Gift table
- Venue set up
- Bridal table
- Service staff for the evening
- Music connection for a cellphone & use of inhouse sound system
- Wireless handheld microphone
- Specified menu

Choice of dining options:

	OFF PEAK	PEAK
Gourmet BBQ Dinner	\$175	\$199
Three Course Shared Platter	\$195	\$219

Extra Special Touches:

Arrival glass of bubbles on board TSS Earnslaw Steamship	\$12 pp
Standard Beverage Package – 1 Hour Two whites and one red wine, New Zealand beer, soft drinks & juice	\$45 pp
Premium Beverage Package – 1 Hour Three whites and one red wine, New Zealand & International beer, soft drinks & juice	\$55 pp
Wedding cake individually plated, served with cream	\$8 pp
Charter vessel transfer (>65 guests)	\$520 flat fee OFF PEAK \$650 flat fee PEAK
TSS Earnslaw Late Departure and extended venue hire (11.15pm from Walter Peak)	\$2200.00 flat fee

All prices are in New Zealand dollars including 15% GST
and are valid until 30th September 2022

OFF PEAK May – October
PEAK November – April



Testimonials



Pip and Mark

"Nobody at our wedding was from Queenstown and it was important to us that our guests not only enjoyed themselves, but had an experience at the same time. We made such a fantastic decision when we chose to have our wedding at Walter Peak Station!"

Lisa and Duncan

"We just wanted to drop you a quick line to say a huge thank you for making our wedding day so awesome :) It has been great to work with a bunch of people who just get on and do their jobs so professionally – we felt so relaxed and happy."

Emma and Keith

"We love the outdoors so we had the ceremony outside on the lawn with a great view of the gardens, the homestead and the ranges behind us. The reception was held just a few steps away inside the homestead. We liked the fact that the venue was a working farm station so our nieces and nephews could explore a little. The transport to Walter Peak Station was by an old coal-fired steamship, the TSS Earnslaw."

Frequently Asked Questions



Food & Beverage

Can you supply a wedding cake?

We recommend contacting a local supplier to create your cake. We can assist with transporting it to Walter Peak in time for your reception.

Do you provide printed menus?

Printed menus can be provided for the shared platter and set menu choices only, these are no additional charge.

Where do we have pre-dinner drinks & canapés?

These are usually served on the main lawn.

Do you allow BYO beverages, food or outside caterers?

All beverages and catering must be provided on site by our talented team at the Colonel's Homestead Restaurant.

Do we have to purchase a beverage package?

Not at all – you can choose to pay as you go if you prefer.

Transport

How far away is the venue from Queenstown?

Walter Peak High Country Farm is a leisurely 45 minute cruise via the vintage steamship – TSS Earnslaw. On a separate charter vessel it is approximately a 30 minute cruise and helicopter transfer time depends on the route. The departure point for the TSS Earnslaw and charter vessel is Steamer Wharf in downtown Queenstown.

Can I change the departure time of the TSS Earnslaw?

The TSS Earnslaw operates on a set schedule and is unable to be changed unless an exclusive charter is booked.

Do my guests and I have to travel on the TSS Earnslaw?

No, but it certainly is a major highlight and a special part of getting married at Walter Peak. It's also a fantastic opportunity for your guests to experience an iconic piece of Queenstown's history.

Transport (continued)

How do the bride & groom get to the venue separately from the guests?

Most couples opt to have the bride travel to Walter Peak earlier in the day with her bridesmaids. The groom then travels on the TSS Earnslaw with the guests. Alternatively, the bride can arrive via a separate vessel or helicopter.

Can we drive there?

Although there is a road access to Walter Peak, it is approximately four hours drive from Queenstown across a large portion of gravel road with several river crossings. Access is often restricted because of high water levels and travel by road is not recommended.

Can we arrive by helicopter?

Yes. Several local helicopter companies are familiar with the location and the heli-landing area is an easy five minute walk to the Homestead. Please ask us for pricing.

Venue

Do we have to have both the ceremony and reception on-site?

No. We can tailor a package for your requirements, however we highly recommend having the ceremony and reception with us to take advantage of the unique charm of our vintage steamship as well as Walter Peak's stunning lakeside location.

Do you provide a sound system?

The Colonel's Homestead is equipped with a sound system with iPod connection that can be played through the PA system. There is no sound system outside, however we can provide access to power if you'd like to provide your own.

Can you organise a microphone and audio visual equipment?

Yes, we have two wireless microphones available for use in the Colonel's Homestead (free of charge) which are included in the venue hire. If screens or projectors are required then these will need to be hired in from an outside supplier, which we will be happy to arrange for you for an additional charge.

What if the weather is bad?

We will work through a wet weather option during the planning stage. Usually the ceremony would be moved inside the Colonel's Homestead. A marquee may be required (additional cost), this would be for weddings over 120+ guests advised at time of enquiry.

Do you have a dance floor?

The Ballroom has hard wooden flooring which makes an excellent dance floor. The Conservatory has a concrete floor and the rest of the floors throughout the homestead are carpeted.

Can we extend the finishing time of our reception?

Due to our licensing and operational requirements, the last scheduled sailing from Walter Peak is 9:15pm, it is possible to extend this to 11:15pm for an additional fee.

What sort of tables do you have and how many people can fit on each?

We have long tables that seat anywhere between six to 20 guests based on the floor plan and menu you decide to go with.

Can you provide decorations and centre pieces?

We will be happy to provide you with a few options, however we recommend you source your own table decorations from a local specialist to ensure your own personal preference. We can work with your supplier directly to arrange the logistics of the delivery and set up.

Will there be other people around during my ceremony?

Walter Peak is a year-round destination and caters to tourists from around the globe. During your ceremony it is likely there will be other guests on the grounds, however they are generally occupied with pre-scheduled activities and we do our best to ensure that your celebration is as private as possible. At certain times of the year we do offer the option to ensure exclusivity of the grounds for an additional fee.

Can we stay on site?

We have no on-site visitor accommodation at Walter Peak High Country Farm and we recommend staying in Queenstown. Approximately 7 kms from Colonel's Homestead, there is a private lodge, 'The Lodge' at Walter Peak Station which is privately owned and operated.



Terms & Conditions

Bookings

Bookings must be made directly with the Real Journeys Special Events team and can be made up to two years in advance.

Confirmation

Once you have confirmed your reservation in writing, you will be issued our full terms and conditions and deposit invoice.

Deposit

To secure your booking, a 25% deposit of the estimated total cost is due within 30 days of booking. We accept most payment methods.

Payment Terms

Full payment is required one week before your wedding, unless prior credit arrangements have been made.

Cancellation

Should unforeseen circumstances arise and cancellation is required, the deposit is non-refundable. The full cancellation policy will be outlined in your personalised terms and conditions.

Numbers

A guaranteed number of guests attending is required seven full working days prior and charges will be based on this confirmed number even if numbers are lower on the day.

Venue Access

Access to the venue for set up will depend on the daily operation at Walter Peak. Any contractors will be advised in advance when they can access the venue to pack in and pack out.

Children

Children are welcome at Walter Peak High Country Farm. Those between the ages of 5-14 are charged at 50% of the adult package rates. Four and under are free of charge.

Alcohol

Both the TSS Earnslaw Steamship and Colonel's Homestead Restaurant at Walter Peak are fully licensed venues.

Music

We welcome all forms of entertainment for weddings however when the venue has not been hired exclusively, music must not impact on other guests' experience. Please confirm your entertainment with us.

Trading Hours

The standard venue hire fees covers access to the specific venues at the pre arranged time lines. Any extension to this will be at a charge. The latest permissible departure for the TSS Earnslaw is 11.15pm.

Site Visits

A site visit for two people accompanied by a member of Real Journeys events team is available free of charge, and must be pre-arranged. Further visits to Walter Peak will incur an additional charge. Any questions that arise after the site inspection can be discussed via phone and email.

Contractors

We will provide a set number of complimentary tickets for travel on the TSS Earnslaw for contractors such as photographers, celebrants, musicians and florists. The quantity of tickets is determined by the size of the wedding and will be advised with the written contract. Contractors' details must be given to Real Journeys in advance.



Recommended Contractors

Wedding Planners

Simply Perfect
simplyperfect.co.nz
Phone: +64 3 442 4148

Photographers

Dan Childs
222photographicstudios.com
Phone: +64 27 326 4355

Carla Mitchell
carlamitchellphotography.co.nz
Phone: +61 21 163 6499

Wedding Cakes

Cherry Blossom Cakes
cherryblossomcakes.co.nz
Phone: +64 21 178 9887

Truly Scrumptious Cakes
Trulyscrumptious.co.nz
Phone: +64 21 0625 747

Music

LA Social Club
lasocialclub.net
Phone: +64 27 443 3661

Calico
calicoentertainment.com
Phone: +64 21 137 2636

Hair & Makeup

Iron + Ivy
ironandivyhair.com
Phone: +64 3 428 2595

Forme Spa
Formespa.co.nz
Phone: +64 3 442 9656

Celebrants

Tracey Maclaren
traceymaclarencelibrant.co.nz
Phone: +64 3 442 1347

Phillipa Cook
phillipacook@celebrant.co.nz
Phone: +64 3 442 7143

Florists, Decor & Styling

The Flower Room
theflowerroom.co.nz
Phone: +64 3 442 5355

Everyday Flowers
Everydayflowersnz.com
Phone: +64 21 294 7401

Queenstown Wedding Hire
queenstownweddinghire.com
Phone: +64 3 442 4148



We are a member of the Queenstown Wedding Association –
visit queenstownweddings.org for more quality suppliers.



Special Events Team
Level 2, 74 Shotover Street, Queenstown

PHONE 0800 65 65 01 events@realjourneys.co.nz realjourneys.co.nz

JAN2021