

DOUBTFUL SOUND

# Overnight Cruises

A timeless landscape.  
An unforgettable time.

 1 night duration

First, you'll travel across Lake Manapouri before a coach trip across the stunning Wilmot Pass brings you to the Fiordland Navigator and the trip out into the Sound.

By day you can explore further via kayak then, under the vast night sky, above the mesmerising waters, you'll find good company and great food.

This is a journey into the natural heart of New Zealand, an overnight cruise with equal amounts of astonishing views and whole-hearted adventure.

What's onboard?

- Three course buffet dinner, cooked and continental breakfast prepared on board
- Tea, coffee and delicious snacks
- Kayaking or exploring by small boat through Patea, the 'place of silence'
- The chance to meet fur seals, Bottlenose dolphins & rare local penguins
- Insightful commentary from your Nature Guides
- Bedding and towels
- Offers private cabins with ensuite and quad-share bunk rooms (shared bathrooms), (sleeps 72)
- Spacious viewing decks

DOUBTFUL SOUND

## What to bring

- Toiletries
- Camera
- Insect repellent
- Waterproof jacket
- Warm clothing
- Sunscreen
- Non-slip footwear
- Pack a lunch or pre order one of our delicious lunch options

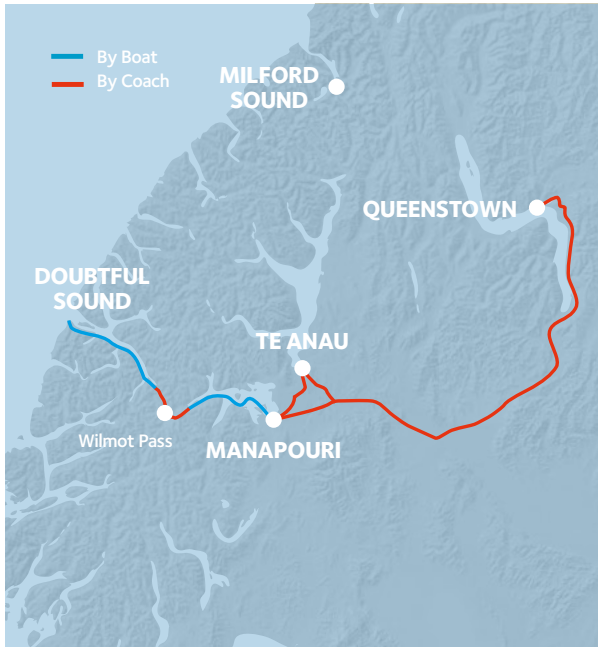


Summer Schedule (October – March)

	Departs	Returns
From Manapouri – Cruise only	12.30pm	11.45am
From Te Anau – Coach & Cruise	11.30am	12.45pm
From Queenstown – Coach & Cruise	9am	3.30pm

Shoulder Schedule (April – 23 May & September)

	Departs	Returns
From Manapouri – Cruise only	12pm	11.45am
From Te Anau – Coach & Cruise	11am	12.45pm
From Queenstown – Coach & Cruise	9am	3.30pm



GETTING TO

## Doubtful Sound

All our Doubtful Sound experiences start in Manapouri. You can drive there yourself or if you'd much rather relax, let us do the driving for you.

 By Coach

FROM QUEENSTOWN  3hrs to Manapouri

On board our coach, travel around Lake Wakatipu and through rolling farmland to Manapouri township. Our coach drivers will provide you with informative commentary along the way.

FROM TE ANAU  30mins to Manapouri

A smaller coach provides transfers to Manapouri for travellers joining our Doubtful Sound experiences.

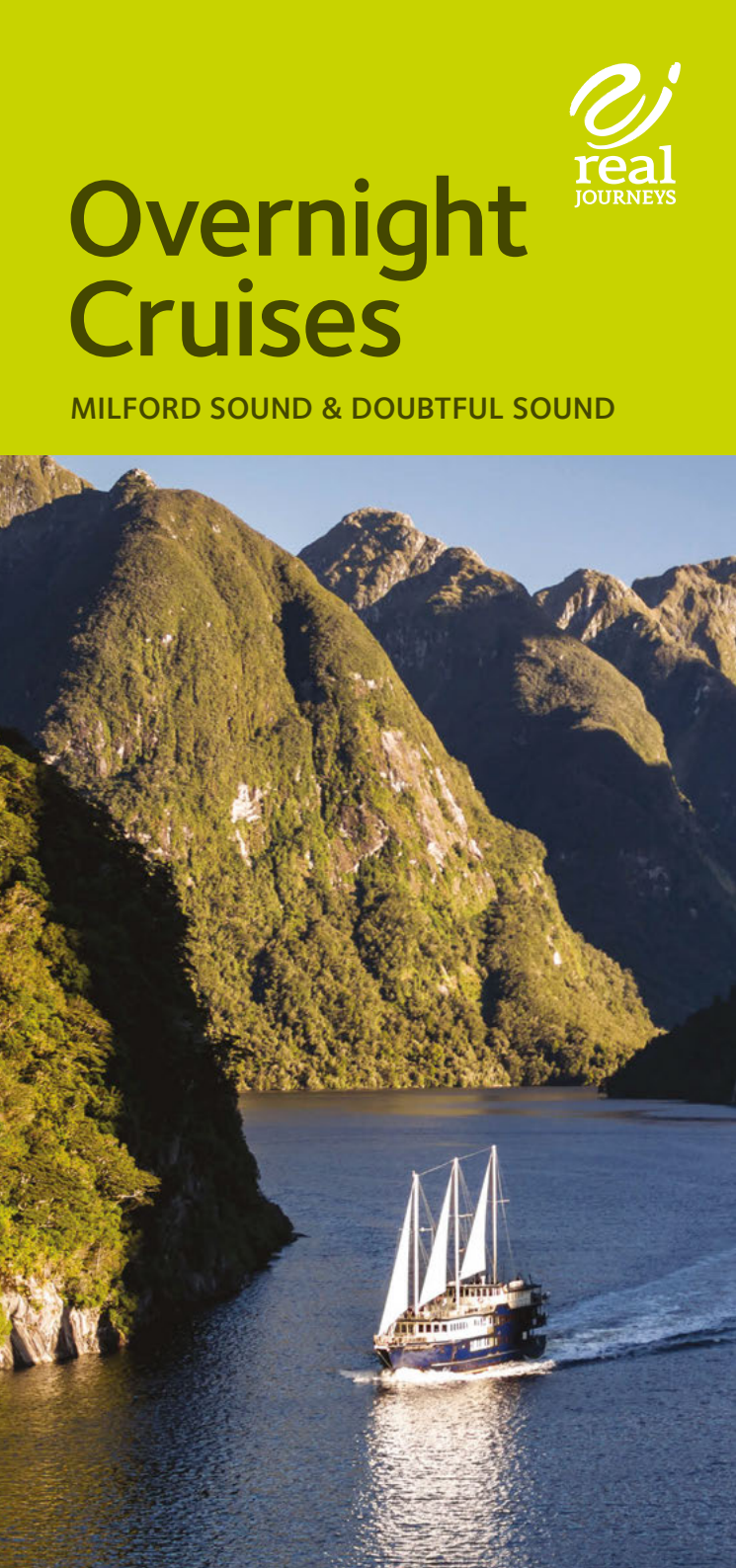
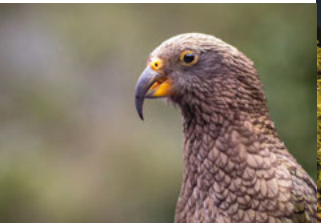
*Courtesy pick ups are available from most Queenstown and Te Anau accommodation.*

From Manapouri

Your Doubtful Sound experience begins with a cruise across the picturesque Lake Manapouri followed by a trip over New Zealand's most expensive road — the Wilmot Pass — before arriving in Deep Cove, Doubtful Sound.



These animals can often be seen in both Milford Sound and Doubtful Sound.



# Overnight Cruises

MILFORD SOUND & DOUBTFUL SOUND



MILFORD SOUND

# Overnight Cruises

Take in the sights.  
Wake in the splendour.

 1 night duration

There's something uniquely relaxing about being on board our overnight Milford Sound cruises. It's time to take a deep breath and become truly entranced with this incredible place.

There's still plenty of exploring, eating and entertainment to be had before you drift off to sleep. Inspiring, exhilarating, restful and rewarding, it's an experience that ultimately changes you for the better.



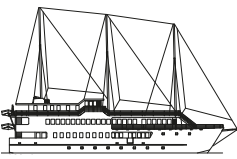
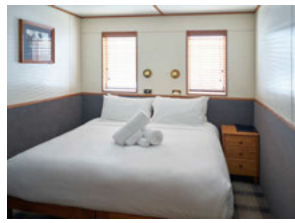
MILFORD MARINER

# Overnight Cruise



What's onboard?

- Three course buffet dinner, cooked and continental breakfast prepared on board
- Tea, coffee and delicious snacks
- Kayaking or exploring by small boat with Nature Guide
- The chance to meet fur seals and Bottlenose dolphins
- Insightful commentary from your Nature Guides
- Bedding and towels
- Offers private cabins and quad-share bunk rooms with ensuite (sleeps 64)
- Spacious viewing decks



Milford Mariner

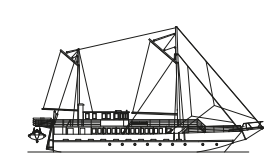
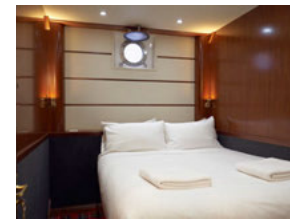
MILFORD WANDERER

# Overnight Cruise



What's onboard?

- Three course plated dinner, cooked and continental breakfast prepared on board
- Tea, coffee and delicious snacks
- Exclusive Milford Track short walk or guided small boat journey
- The chance to meet fur seals and Bottlenose dolphins
- Insightful commentary and from your Nature Guides
- Bedding and towels
- Offers private cabins and quad-share bunk rooms, both with shared bathrooms (sleeps 36)
- Spacious viewing decks



Milford Wanderer

MILFORD SOUND

# What to bring

- Overnight bag
- Toiletries
- Camera
- Insect repellent
- Waterproof jacket
- Warm clothing
- Sunscreen
- Non slip-footwear



Mariner Schedule (September – 23 May)

	Departs	Returns
From Milford – Cruise only	4.30pm	9.15am
	3.30pm	9.15am
From Te Anau – Coach & Cruise	12.45pm	12.30pm
From Queenstown – Coach & Cruise	9am	3.30pm

Wanderer Schedule (November – March)

	Departs	Returns
From Milford – Cruise only	4.30pm	9.15am
From Te Anau – Coach & Cruise	12.45pm	12.30pm
From Queenstown – Coach & Cruise	9am	3.30pm

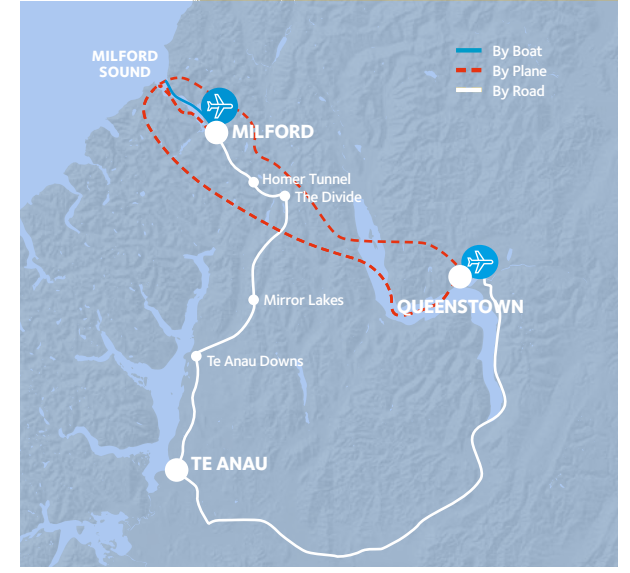
■ October to April ■ September & 1 to 23 May

GETTING TO

# Milford Sound

We offer a range of transport options that link directly with your cruise, ensuring hassle-free connections and a relaxed way to take in everything the trip has to offer.

- Stylish purpose-built coaches departing from Queenstown and Te Anau
- Complimentary Wi-Fi on all coaches
- Quality fixed wing aircraft, scenic flight connections from Milford Sound back to Queenstown (weather dependent)
- Courtesy pick ups from most accommodation in Te Anau and Queenstown



For all enquiries and reservations

0800 65 65 01  
realjourneys.co.nz  
contact@realjourneys.co.nz

or visit a Real Journeys Visitor Centre

QUEENSTOWN: 88 Beach Street, Steamer Wharf  
TE ANAU: 85 Lakefront Drive  
MANAPOURI: 64 Waiau Street

@realjourneys #realjourneys   

See our website for more info, booking conditions and our cancellation policy.



Printed in New Zealand using environmentally friendly inks and paper