

2019 / 2020

TRADE MANUAL

QUEENSTOWN | MILFORD SOUND
DOUBTFUL SOUND | DUSKY SOUND
TE ANAU | STEWART ISLAND

WELCOME

Real Journeys shares this exceptional corner of the world through remarkable tourism experiences.



Real Journeys shares this exceptional corner of the world through remarkable tourism experiences.

Founded in 1954, by tourism pioneers Sir Les and Olive Hutchins, Real Journeys remains true to their guiding principles of conservation and southern hospitality.

We are privileged to operate in this spectacular wilderness region and take our responsibility to look after and preserve our environment seriously. We have been recognised for our conservation efforts and were one of the first companies to sign up to the New Zealand Tourism Sustainability Commitment. We monitor our carbon footprint and through the adoption of technical innovations minimise emissions, wake and noise pollution. The quality of our plant and day-to-day operational practices ensures that we can offer visitors the best experience possible while minimising our impact on the environment.

This year's Qualmark evaluations have seen Real Journeys upgrade from Silver to Gold Sustainable Tourism Business Awards for its Milford Sound Cruises (day and overnight); Milford Track Day Walk; TSS Earnslaw; Walter Peak High Country Farm; Te Anau Glowworm Caves; Doubtful Sound Cruises (day and overnight); Stewart Island Experience and Discovery Expeditions. A Gold Award is Qualmark's highest assessment rating and "identifies those businesses leading the way to make the country's tourism industry a world class sustainable visitor destination".

- Qualmark Gold Sustainable Tourism Business Award
- Qualmark Silver Sustainable Tourism Business Award
- Qualmark Endorsed Visitor Activity accreditation
- Qualmark Accommodation Four Star Plus (Stewart Island Lodge)
- Nine TripAdvisor Certificates of Excellence

Some of our accolades include:

- Otago Daily Times Business of the Year (2018)
- New Zealand Tourism Awards Business Excellence finalist (2018)
- New Zealand Tourism Awards People's Choice winner (2017)
- Supreme Winner at 2017 Diversity Awards NZ (2017)



Contents

Milford Sound	2 - 15
Doubtful Sound / Manapouri	16 - 21
Te Anau Glowworm Caves	22
Milford Track Day Walk	23
TSS Earnslaw / Walter Peak	24 - 31
Stewart Island	32 - 37
Discovery Expeditions	38 - 39
Conservation In Action	41
Map (fold-out)	42

GETTING TO Milford Sound

No matter how many photos you've seen of Milford Sound, nothing can prepare you for the incredible feeling of actually being there. It is an inspiring and exceptional place and getting there is definitely part of the experience.

Whether you are coaching with us or travelling independently the overland route, which traverses Te Wāhipounamu UNESCO World Heritage Area, will be a trip highlight. To ensure hassle-free connections with our cruise options, we operate our own fleet of luxury glass-roof coaches and aircraft.

Milford Sound Highlights

- Be awed by the vista of Mitre Peak rising 1,692 metres out of the water
- Cruise Milford Sound – the ultimate way to experience the unforgettable grandeur of this mighty fiord
- Wildlife viewing opportunities include the curious Kea along the Milford Road, plus seals, dolphins and penguins in Milford Sound



KEA

Points of interest on the Milford Road

MIRROR LAKES

Famous for their mountain reflections

THE DIVIDE

Pass across the Southern Alps (531m)

MONKEY CREEK

Taste fresh water straight from the alpine source

HOMER TUNNEL

1219m long with a 1 in 10 gradient

THE CHASM

Powerful waterfalls and sculpted rock

These are a few of the potential stops along the Milford Road. Our drivers will choose the best ones depending on the season and weather – each day is different.

Coach design boosts fuel efficiency, minimises emissions, wake and noise pollution.



Real Journeys links luxury coaches and aircraft directly with our cruises in Milford Sound. This ensures seamless connections to deliver a professional service and remarkable experience.



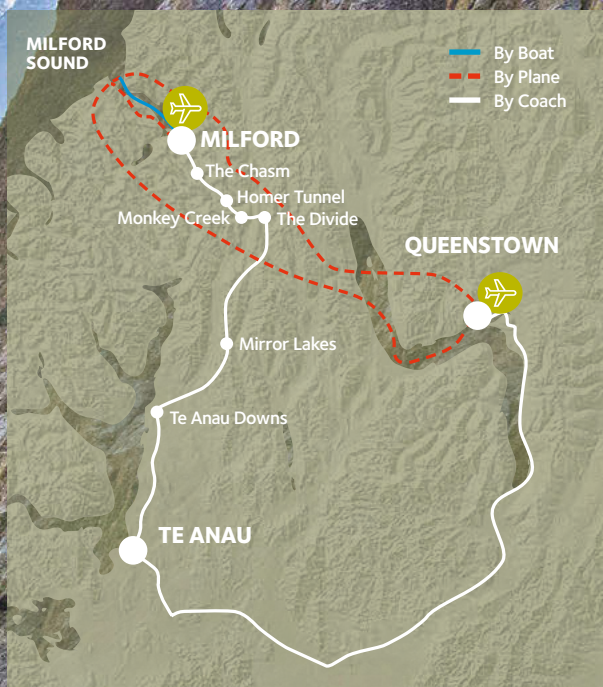
By Coach

- Luxury glass-roof coaches with glass above every seat
- Seats are ergonomically designed, angled towards the window and are reclinable
- Theatre-style seating allows unobstructed views
- Air conditioned for comfort with WiFi
- Complimentary accommodation pick ups available in Queenstown and Te Anau
- Stop in Te Anau for a 30 minute morning tea break and enjoy the view of Lake Te Anau (ex Queenstown)
- Plenty of opportunities for photo stops and short walks along the Milford Road
- Experienced local drivers provide detailed commentaries
- Premium package seating is available in the first two rows and includes a travel pack

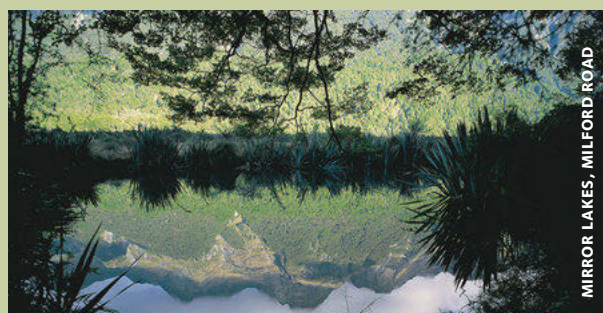


Self Drive

- For those that choose to self drive, parking is available at Milford Sound. Allow an extra 10mins to walk to the terminal



COACH INTERIOR



MIRROR LAKES, MILFORD ROAD

GETTING TO Milford Sound

Flying between Queenstown and Milford Sound is a breathtaking way to experience southern New Zealand's dramatic alpine scenery, before connecting to a cruise in Milford Sound.



By Plane

- Enjoy remarkable views across glacial fed valleys and dramatic mountainous landscapes on the way to Milford. The return journey travels over rainforested valleys and roaming high country farmland
- Unparalleled viewing from every seat on the aircraft
- All aircraft are particularly suited for flying over rugged, mountainous terrain such as the spectacular Southern Alps
- Informative commentary provided by experienced pilots
- Detailed flight plan handouts are also available on board (English, Chinese and Japanese)
- Fly-over options available
- Complimentary taxi pick ups and drop offs provided from most Queenstown accommodation

Civil Aviation Authority approved operator, where safety is paramount.

Pilots undertake extensive training in a mountain environment and all pilots have thousands of hours of flying experience.

Fleet

- Three GA8 Airvan (single engine, six seater)
- Three Grand Cessna Caravans (single engine, 12 seater)

Note: Additional aircraft (single or twin engine) are subcontracted as required. All flights are weather dependent.



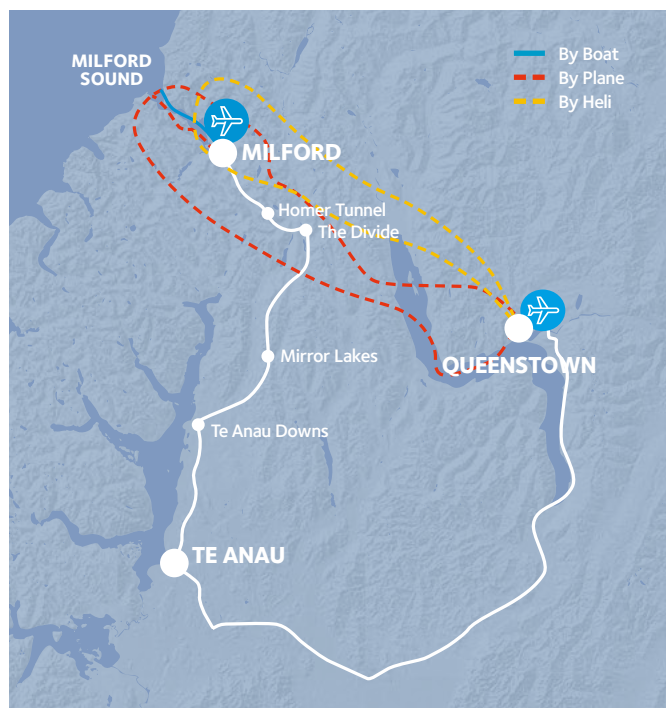


By Helicopter

- We coordinate spectacular helicopter flights between Queenstown and Milford to connect with our cruises in Milford Sound
- View mountains, valleys and ice fields up close and, if weather permits, a glacial landing is included
- Heli over option available
- Option to stop at Walter Peak for BBQ Dinner
- Complimentary taxi pick ups and drop offs provided from most Queenstown accommodation

Fleet

- AS350 B2 helicopter



MILFORD SOUND

Nature Cruises

See, learn and experience more!

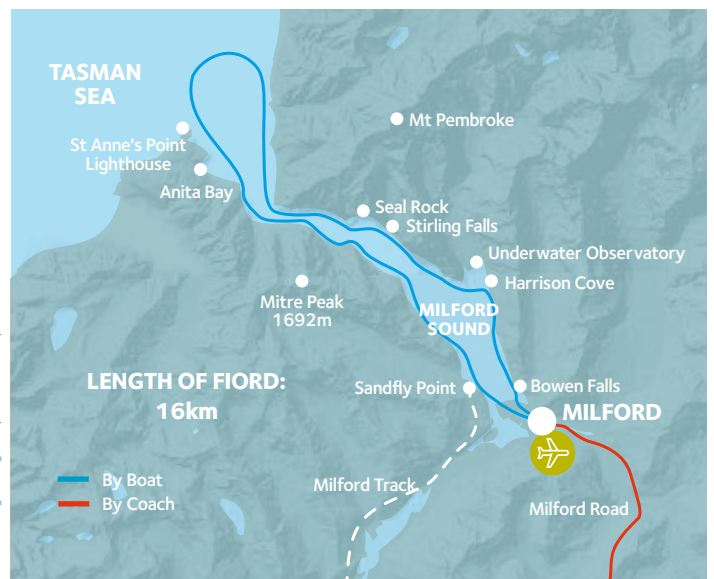
MILFORD MARINER

Our longest and most leisurely Milford Sound cruise.

- Experience Milford Sound on an exciting and interactive cruise
- Cruise up to two hours and 15 minutes allowing plenty of time to look out for wildlife – seals, dolphins and penguins
- Explore the full length of the fiord, past St Anne's Point Lighthouse and right out to the Tasman Sea (weather permitting)
- A dedicated Nature Guide provides informative commentary and interacts with guests
- Nose right into the waterfalls and the fiord's sheer cliff faces
- Smaller boats provide a more intimate cruise
- English only commentary
- Interpretation handouts in multiple languages (English, German, French, Spanish, Portuguese, Chinese, Korean and Japanese)
- Picnic lunch, Indian lunch box and Obento available (must be pre-ordered)
- Snacks available for purchase on board
- Complimentary tea and coffee available and licensed bar on board
- Queenstown and Te Anau glass-roof coach connections
- Year round Queenstown flight options, connecting to selected Nature Cruise departures



Route may vary dependent upon weather





Milford Mariner

- Traditional style motor vessel with staysail schooner rigged sails
- Three viewing decks, observation lounge and dining saloon
- Length: 40 metres

Milford Wanderer

- Traditional style motor vessel with gaff rigged ketch sails
- Two viewing decks and dining saloon
- Length: 30 metres

MV Sinbad

- Purpose built mono hull motor vessel
- Two viewing decks
- Length: 21 metres
- Available for charters

Season	Departs - Returns
From Milford → Cruise Only	
Oct - Apr	10.30am - 12.45pm
May - Sep	10.30am - 12.30pm
Nov - Apr	11am - 1.15pm
May - Sep	12.55pm - 2.55pm
Sep - Apr	1.35pm - 3.50pm
Nov - Mar	4.15pm - 6.30pm
From Te Anau → Coach + Cruise	
Oct - Apr	7.30am - 4.30pm
May - Sep	9.50am - 4.30pm
Oct - Apr	10.20am - 5.45pm
From Queenstown → Coach + Cruise	
May - Sep	6.55am - 7.45pm
Oct - Apr	7.15am - 8pm
From Queenstown → Coach + Cruise + Flight	
May - Sep	6.55am - 4.10pm
Oct - Apr	7.15am - 5.10pm
From Queenstown → Flight + Cruise*	
May - Sep	9am - 1.40pm
May - Sep	12noon - 4.10pm
Oct - Apr	12.30pm - 5.10pm

*Includes a free picnic lunch. Note: Milford Mariner and Milford Wanderer are interchanged for Nature Cruises at 10.30am and 1.35pm (summer) / 12.55pm (winter). The MV Sinbad will operate at 11am and 4.15pm. Bowen Falls Walk and the Milford Discovery Centre can be added (self-drive only).



FIORDLAND CRESTED PENGUINS



MV SINBAD

MILFORD SOUND

Scenic Cruises

Experience Milford Sound's towering peaks and wild waterfalls.

- Cruise past waterfalls to the mouth of the fiord on a modern, spacious vessel with excellent viewing
- One hour and 40 minute cruise
- Wildlife viewing opportunities including seals, penguins and dolphins
- Get close to waterfalls to witness nature's power
- Mono hull design offers the most window seating in Milford
- Enjoy uninterrupted views from comfortable interiors
- Private area available for groups
- Nature Guide provides interactive commentary on the 1.45pm Scenic Cruise
- Multi-lingual commentaries with foreign language guides on selected departures
- Interpretation handouts in multiple languages (English, German, French, Spanish, Portuguese, Chinese, Korean and Japanese)
- Fresh lunches prepared on board include International Buffet, Indian Buffet, Rock Lobster starter, Seafood Platter, Obento, Indian lunch box and picnic (all must be pre-ordered); sandwiches and snacks available for purchase
- Lower level kitchen galley and buffet means uninterrupted views from main decks
- Complimentary tea and coffee available, espresso coffee and licensed bar on board
- Queenstown and Te Anau glass-roof coach connections
- Year round Queenstown flight options connecting to selected Scenic Cruise departures (weather dependent)

Milford Sovereign

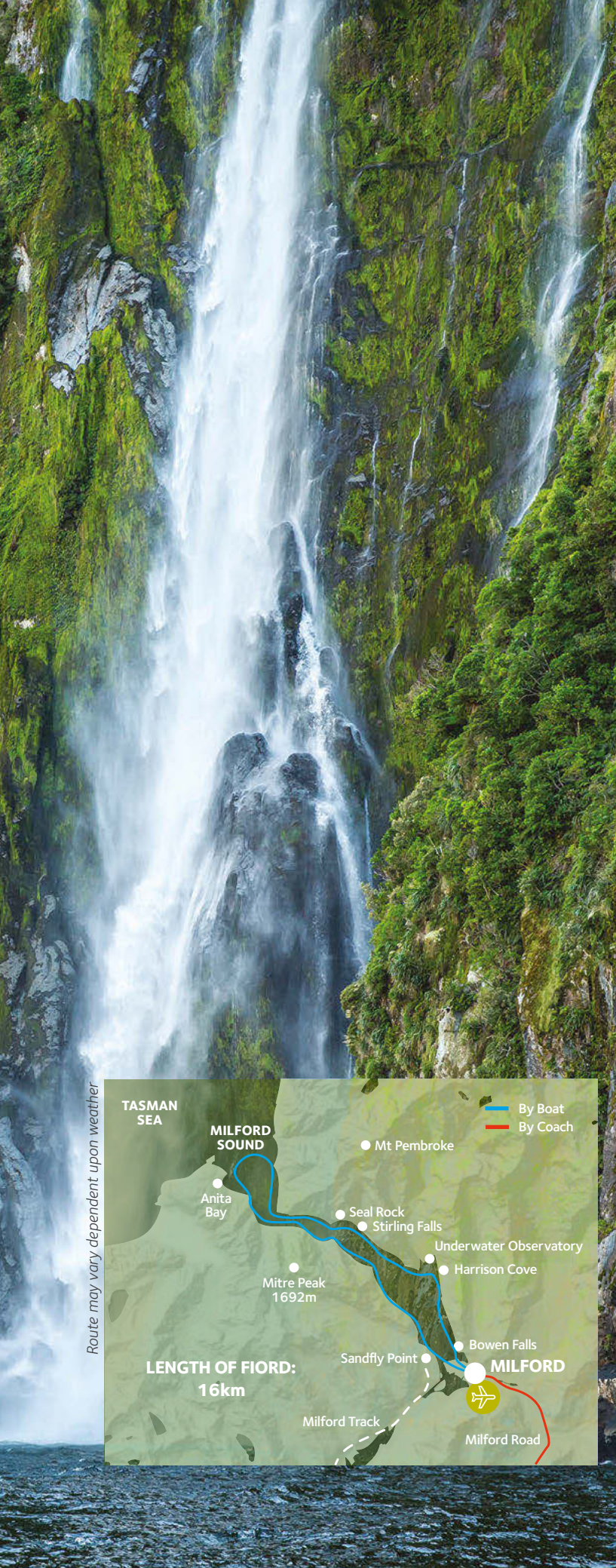
- Scenic motor vessel purpose built for cruising within Milford Sound
- Three spacious observation decks and private room available to book
- State of the art navigation and safety equipment
- Length: 40 metres
- Variety of catering options available

Milford Monarch

- Scenic motor vessel purpose built for cruising within Milford Sound
- Three spacious observation decks and private room available to book
- State of the art navigation and safety equipment
- Length: 39 metres
- Variety of catering options available



MILFORD SOVEREIGN



Route may vary dependent upon weather



Season	Departs - Returns
From Milford Cruise Only	
All Year (Breakfast included)	8.45am - 10.45am
All Year	11am - 12.40pm
Oct - Apr**	12noon - 1.30pm*
All Year	1pm - 2.40pm
Oct - Apr	1.45pm - 3.25pm
Sep-Apr	3pm - 4.40pm
From Te Anau Coach + Cruise	
Oct - Apr	7.30am - 4.30pm
All Year	9.50am - 5.25pm
From Queenstown Coach + Cruise	
All Year	6.55am - 7.30pm
Oct - Apr	7.15am - 8pm
Dec- Feb	9am - 9.30pm
From Queenstown Coach + Cruise + Flight	
All Year	6.55am - 3.40pm
Oct - Apr	7.15am - 5.10pm
From Queenstown Flight + Cruise[^]	
Oct - 15 Apr	8am - 11.40am
Oct - Apr	10am - 1.40pm
May - Sep	12noon - 3.40pm
Oct - 15 Apr	2pm - 5.40pm
From Queenstown Heli + Cruise	
All Year	10am - 1.40pm

**Please note: This cruise is a shorter duration at 1hr 30mins.*
***Combo available with Glowworm Caves (Nov - March)*
[^]Includes a free picnic lunch.
Check in 20mins prior to departure. Bowen Falls walk added for self drive customers only.



BOTTLENOSE DOLPHINS

MILFORD SOUND

Lunch Options

Using the freshest ingredients our talented on-board chefs create delicious lunch options.

Please ensure lunch is pre-ordered for your guests as the selection in Milford is limited to snacks. All lunches are available on Scenic Cruises and must be ordered 24 hours prior to departure.

Obento, Indian lunch box and picnic lunches are available on Nature Cruises.

Bar facilities are available. Tea and coffee (non-espreso) are complimentary on board all vessels.

Note: Dietary requirements catered for if arranged 24 hours prior to departure. Lunch options may vary according to season.



Available on Scenic Cruises



Available on Nature Cruises



There's a food option to suit everyone travelling to Milford...

Rock Lobster Starter and International Buffet

Half Fiordland Rock Lobster, served with international buffet.



Seafood Platter

Prawns, squid, salmon, prawn twisters. Crayfish option available (extra cost).



International Buffet

Steamed dumplings, steamed seasonal greens, stir-fried seasonal greens, green lip mussels, battered South Island fish, chicken dish, Southland beef or venison, Cardrona merino lamb, kimchi, seasonal salads, steamed rice, noodles, fresh fruit, ice cream.



Indian Lunch Box

Spring rolls, samosas, onion salad with lettuce, dahl, vegetable curry, rice, poppadoms, mango pickle, plain yoghurt, ice cream and fruit selection (available on 11am, 1pm and 1.45pm Scenic Cruises and 1.35pm Nature Cruise).



Obento

Sushi, nigiri, miso salmon, marinated tofu, poached teriyaki chicken thigh, steamed vegetables, fresh fruit, hot rice, furikake served with miso, pickled ginger, daikon and wakame salad. Pure NZ ice cream and green tea.



Picnic Lunch

Sandwich, cookie, potato chips, cheese and crackers, fruit, nuts and chocolate.

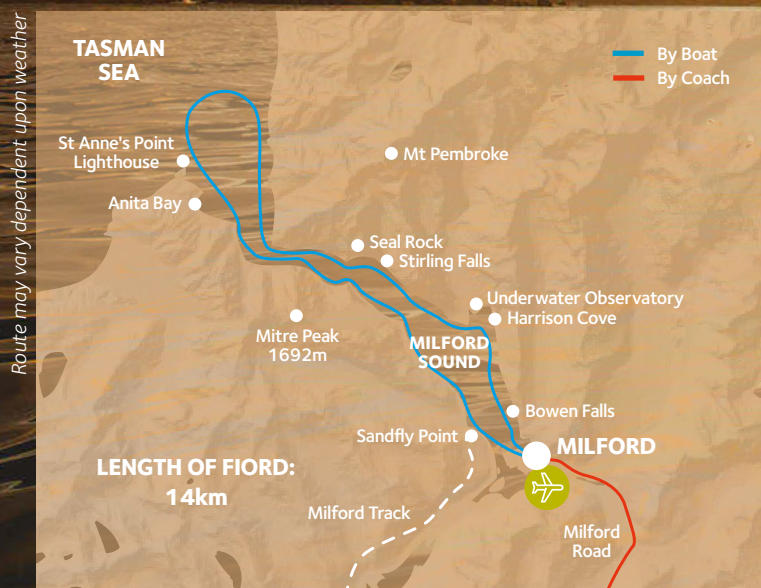


MILFORD SOUND

Overnight Cruises

The ultimate Milford Sound experience.

- Experience the grandeur of Milford Sound when all other day visitors have departed
- Enjoy the sun setting and rising over this UNESCO World Heritage Area
- Keep an eye out for wildlife during an extended cruise of the fiord – seals, penguins and dolphins
- Cruise the full length of Milford Sound at a leisurely pace, past St Anne's Point Lighthouse and out to the Tasman Sea (weather permitting)
- Dedicated Nature Guides impart specialist knowledge about the region's history, flora and fauna, ensuring a memorable trip for all guests (English only commentary)
- Enjoy a relaxed evening of activities, which may include exploring the fiord up close by kayak or tender boat, or a walk on the world famous Milford Track
- Meet like-minded people on this informal and interactive, once-in-a-lifetime experience
- Interpretation handouts in multiple languages (English, German, French, Spanish, Portuguese, Chinese, Korean and Japanese)
- Daily Queenstown and Te Anau luxury coach connections
- Queenstown fly-back options (weather dependent)





Milford Mariner

- Choose to explore the fiord up close by kayak or tender boat
- Three course buffet dinner including appetisers, soups, salads, hot dishes, carvery meats, seafood and a selection of desserts and cheeses (vegetarian options available)
- Licensed bar on board
- Learn more of Milford Sound's history from the Nature Guide presentation after dinner
- Full buffet breakfast with cooked and continental options
- Twin/double/quad cabins with ensuite bathrooms



Milford Wanderer

- Choose to experience an exclusive walk on the world famous Milford Track or hop on the tender boat to explore the fiord up close
- Hearty three course dinner including soups, roast meats, vegetables, salads and dessert (vegetarian options available)
- Licensed bar on board
- Cooked and continental breakfast options
- Twin/double/quad cabins with comfortable and modern shared bathroom facilities



Season	Departs (Day 1) – Returns (Day 2)	Vessel
From Milford Overnight Cruise		
1–23 May & Sep	3.30pm – 9.15am	Mariner
Oct – Apr	4.30pm – 9.15am	Mariner
Nov – Mar	4.30pm – 9.15am	Wanderer
From Te Anau Coach + Overnight Cruise		
Oct – 23 May & Sep	12.45pm – 12.30pm	Mariner
Nov – Mar	12.45pm – 12.30pm	Wanderer
From Queenstown Coach + Overnight Cruise		
Oct – 23 May & Sep	9am – 3.30pm	Mariner
Nov – Mar	9am – 3.30pm	Wanderer

Check in 20mins prior to departure.

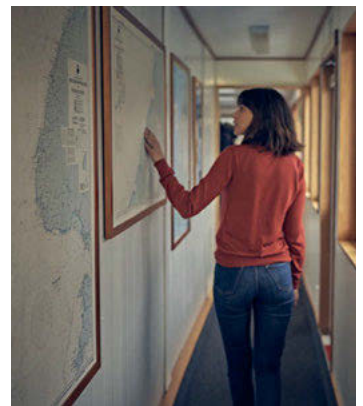
Milford Mariner

Design Features

- Viewing decks, dining saloon and observation lounge
- 28 comfortable private cabins with ensuite bathrooms (16 twin singles / 12 double beds) and two ensuite family rooms with four bunk beds
- Capacity: 64 passengers (overnight)
- Length: 40 metres



Note: Cabin layout may vary on both vessels.



Milford Wanderer

Design Features

- Viewing decks and dining saloon
- 14 comfortable private cabins (twin singles / double beds) and two quad-share bunk style cabins all with modern shared bathroom facilities
- Capacity: 36 passengers (overnight)
- Length: 30 metres

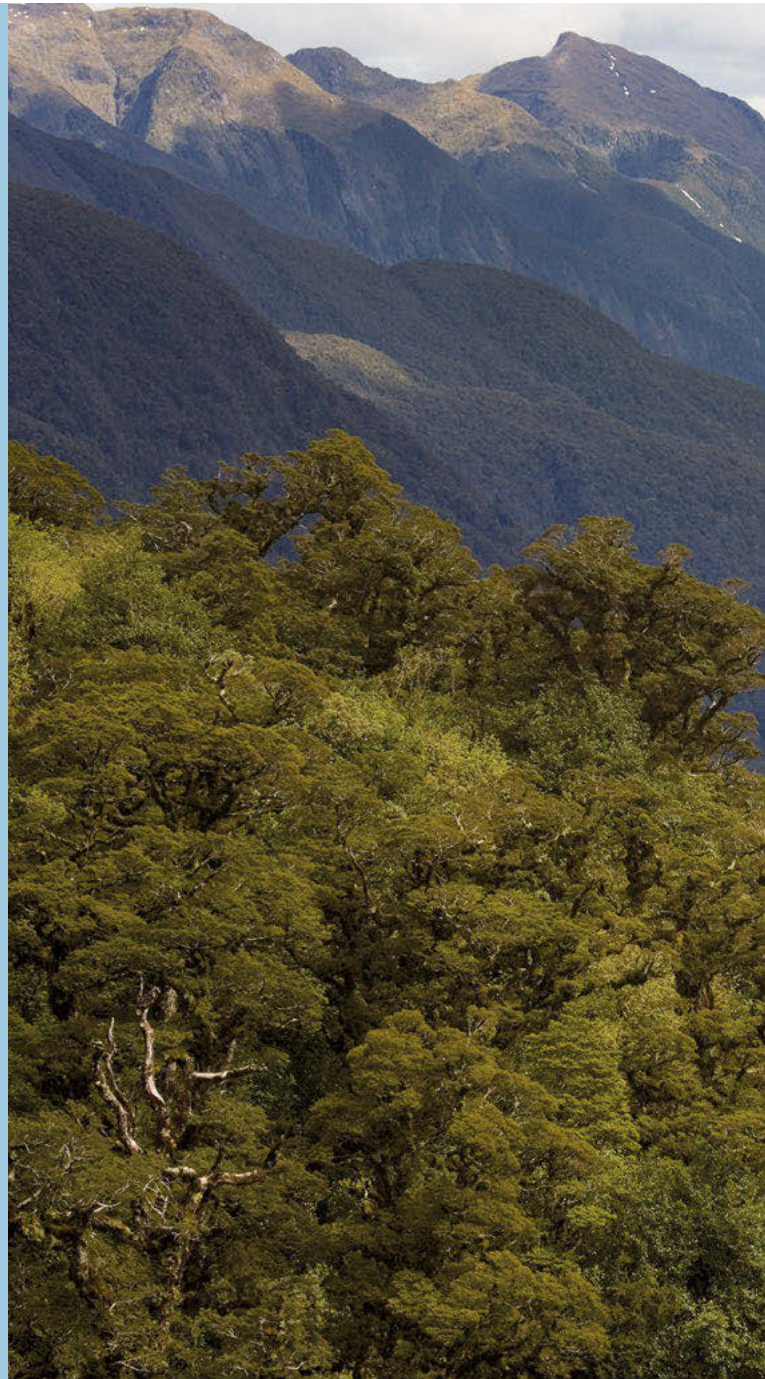


*Head ashore
and walk part of
the world famous
Milford Track*



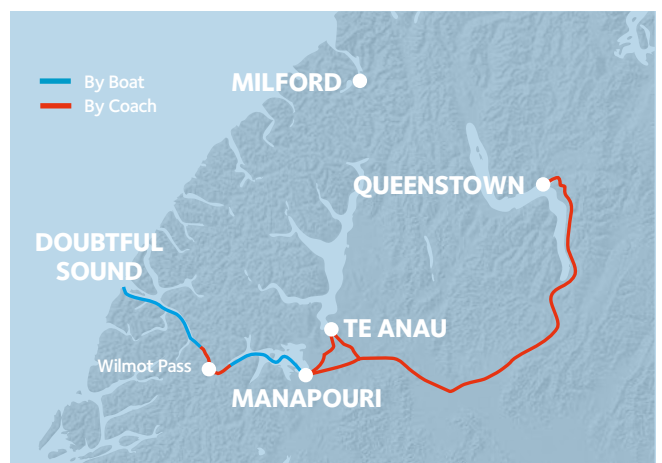
GETTING TO Doubtful Sound

Doubtful Sound lies at the geographic heart of Fiordland National Park. Discover this remote fiord and be struck by the quality of its silence – a silence broken only by birdsong, or the rushing of a distant waterfall or river.



Real Journeys is the only operator offering daily seamless connections to Doubtful Sound – a wilderness fiord that is otherwise inaccessible.

Begin with a cruise across the crystal clear waters of Lake Manapouri. Then travel over Wilmot Pass, stopping along the way to view some of Fiordland's most dense rainforest and Doubtful Sound far below. On reaching Deep Cove, join our daytime Wilderness Cruise or our renowned Overnight Cruise.





Doubtful Sound Highlights

- Three times longer and an area ten times larger than Milford Sound, this is one of New Zealand's last true wilderness areas
- Off the beaten track! Doubtful Sound is remote with far fewer boats and operators compared to Milford Sound
- Cruise across island studded Lake Manapouri, with the Southern Alps as its dramatic backdrop
- Traverse Wilmot Pass, a 671 metre high crossing of the main divide of the South Island
- Soak up the 'Sound of Silence' in this untouched wilderness
- Look out for the resident pod of Bottlenose dolphins in the fiord and the permanent colony of New Zealand fur seals at the Nee Islets

WILMOT PASS



By Coach

From Queenstown

Travel on our luxury coach for only two hours along the shores of Lake Wakatipu and through rolling countryside to Manapouri. Pick ups are available from our Queenstown Visitor Centre and are complimentary from most accommodation.

From Te Anau

A smaller coach provides a 30 minute transfer to Manapouri for travellers joining our Doubtful Sound daytime Wilderness Cruises and Overnight Cruises. Pick ups are available from our Te Anau Visitor Centre and are complimentary from most accommodation.



Self Drive

Parking is available in Manapouri for those who choose to self-drive.

DOUBTFUL SOUND Wilderness Cruises

Secluded, uninhabited and wild.

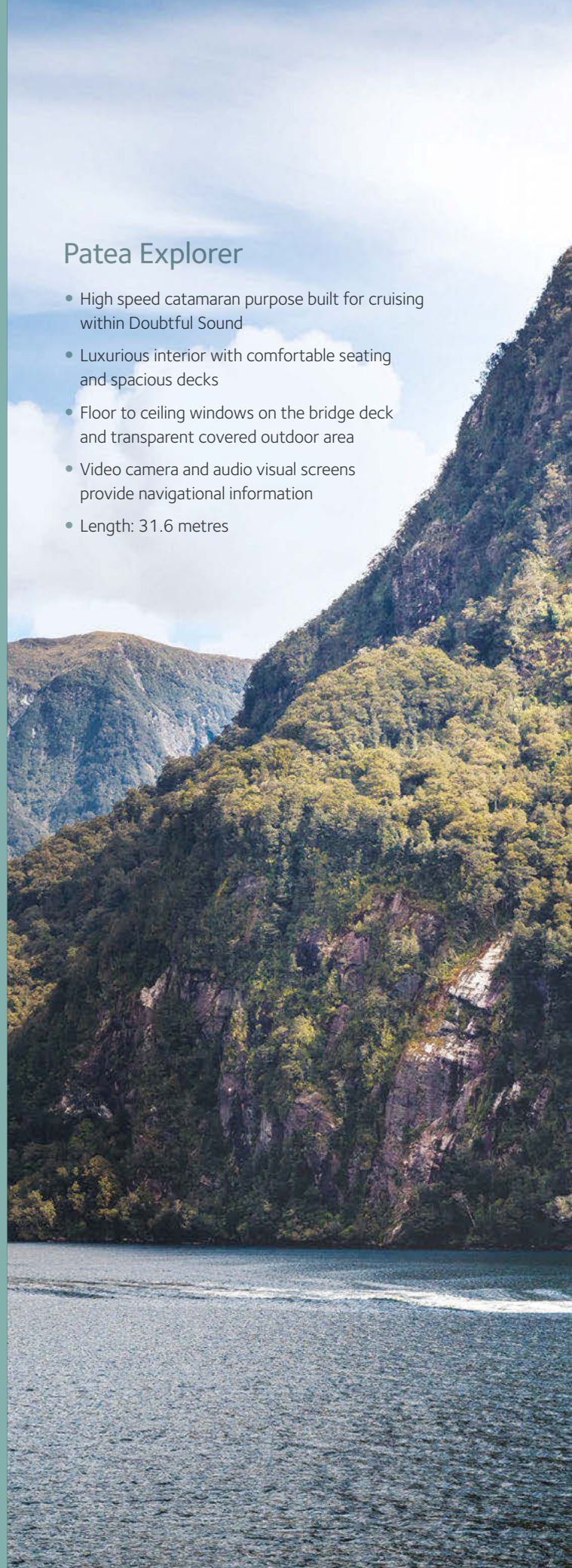
- Nature Guide with specialist knowledge of flora and fauna who will impart interesting information about the area
- Hear only birdsong and waterfalls during the 'Sound of Silence', while floating on the fiord with the boat's engines turned off
- Interpretation handouts in multiple languages (English, German, French, Spanish, Portuguese, Chinese, Korean and Japanese)
- Picnic Lunch, Noodle Box and Deluxe Picnic Lunch available (must be pre-ordered)
- Complimentary tea and coffee available, licensed bar and espresso cafe on board
- Queenstown and Te Anau coach connections
- Complimentary accommodation pick-ups available in Queenstown and Te Anau

Patea Explorer

- High speed catamaran purpose built for cruising within Doubtful Sound
- Luxurious interior with comfortable seating and spacious decks
- Floor to ceiling windows on the bridge deck and transparent covered outdoor area
- Video camera and audio visual screens provide navigational information
- Length: 31.6 metres



Routes shown are indicative only.





Lunch Options



Picnic Lunch

Wrap, fruit salad, chocolate, nut mix and muesli slice



Deluxe Noodle Box

Noodles, wrap, fresh fruit, cake, cheese and crackers, nut mix and chocolate



Deluxe Picnic Lunch

Wrap, fruit salad with yoghurt, croissant, cake or slice, cheese and crackers, chocolate and nut mix

Vegetarian and gluten free options are available.

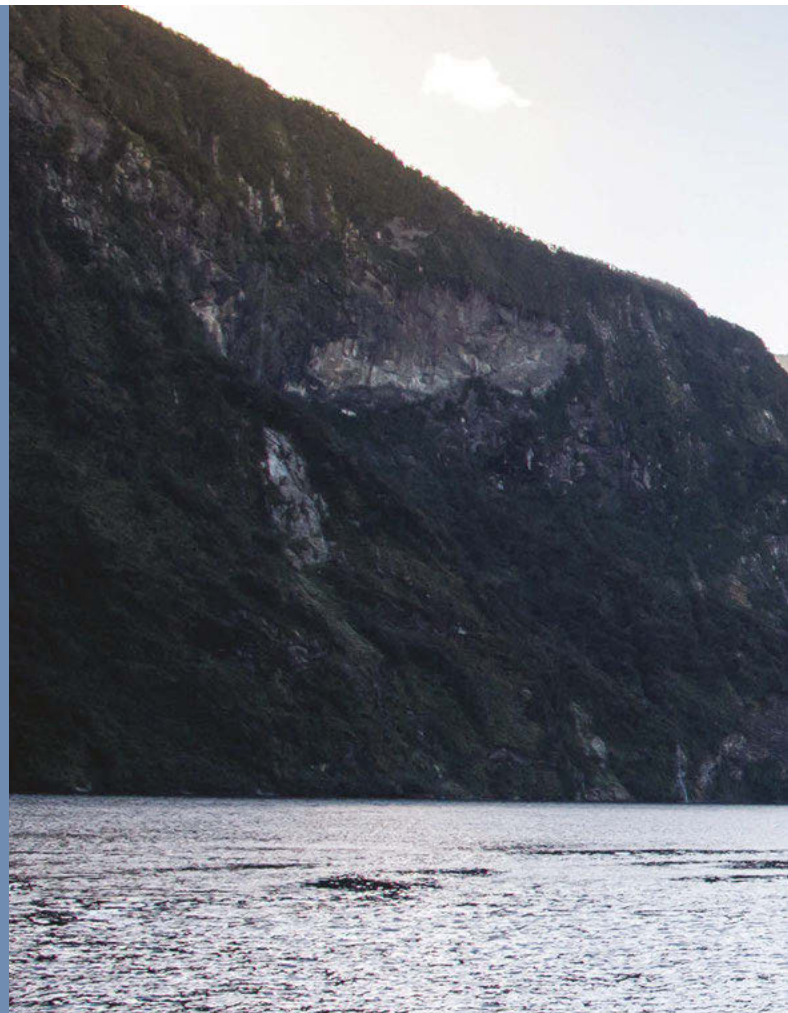


Season	Departs - Returns
From Manapouri	Cruise Only
Nov - Apr	8am - 2.30pm
May - Sep	10.30am - 5pm
Oct - Apr	10.30am - 5.45pm
27 Dec - 29 Feb	1.30pm - 8pm
From Te Anau	Coach + Cruise
Nov - Apr	7am - 3.30pm
May - Sep	8.45am - 5.45pm
Oct - Apr	9.30am - 6.30pm
From Queenstown	Coach + Cruise
May - Sep	6.55am - 7.30pm
Oct - Apr	7.30am - 8.15pm

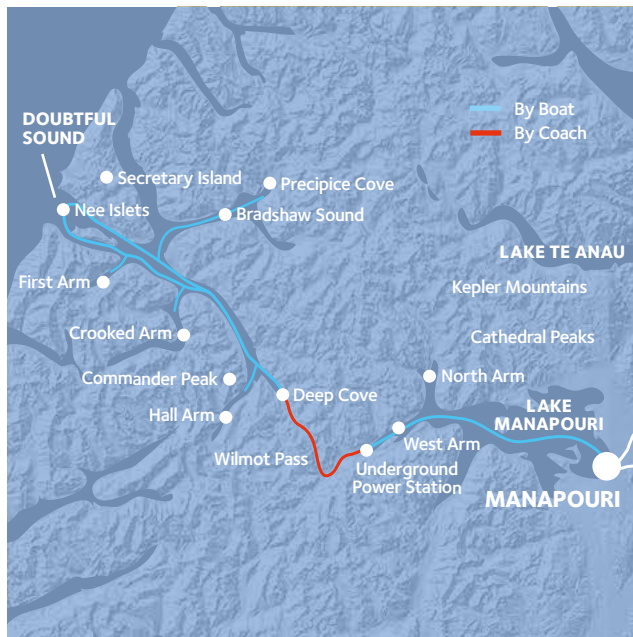
Check in 20mins prior to departure.

DOUBTFUL SOUND

Overnight Cruises



Wake up to wilderness in one of New Zealand's most spectacular and pristine fiords.



- The ultimate way to experience Doubtful Sound and the remote wilderness of Fiordland National Park
- More time on the fiord will improve your chances of spotting penguins, seals at the Nee Islets, and the resident pod of Bottlenose dolphins
- Hear only birdsong and waterfalls during the 'Sound of Silence', while floating on the fiord with the boat's engines turned off
- Learn from our dedicated Nature Guide who provides specialist knowledge of the region's history, flora and fauna
- Explore the Fiord by tender boat or kayak
- Three course buffet dinner including appetisers, soups, salads, hot dishes, carvery meats, seafood and a selection of desserts and cheeses
- Full buffet breakfast including cooked and continental options
- English only commentary
- Interpretation handouts in multiple languages (English, German, French, Spanish, Portuguese, Chinese, Korean and Japanese)
- Queenstown and Te Anau coach connections
- Complimentary accommodation pick-ups available in Queenstown and Te Anau



FIORDLAND NAVIGATOR

Season	Departs (Day 1) - Returns (Day 2)
From Manapouri	Overnight Cruise
Apr - 23 May & Sep	12noon - 11.45am
Oct - Mar	12.30pm - 11.45am
From Te Anau	Coach + Overnight Cruise
Apr - 23 May & Sep	11am - 12.45pm
Oct - Mar	11.30am - 12.45pm
From Queenstown	Coach + Overnight Cruise
Oct - 23 May & Sep	9am - 3.30pm

Fiordland Navigator

- Viewing decks, dining saloon and observation lounge
- 18 private cabins with ensuite bathrooms (12 twin singles / six double beds)
- Nine quad-share bunk style compartments with comfortable shared bathroom facilities
- Capacity: 72 passengers (overnight)
- Length: 38 metres



Note: Cabin layout may vary.

TE ANAU

Glowworm Caves

A magical underground world of sculpted rock, rushing water and a glowworm grotto.



Hidden beneath the mountains on Lake Te Anau's western shores is an underground network of caves lit by thousands of glowworms.

- Enjoy a stunning 30 minute cruise across to the western shores of Lake Te Anau by catamaran
- Explore the caves that are still being carved out by the force of the river that flows through them
- Witness the limestone passages with whirlpools and underground waterfalls that bring this young cave (12,000 years old) alive
- Walk through the cave and learn about the formation of the caves from the Cave Guide
- Board a small boat and enter the silent glowworm grotto where thousands of glowworms glitter overhead
- At Cavern House learn about the surrounding mountains, the cave network and Maori legends
- Take an optional self-guided nature walk into the surrounding forest
- Choose from a variety of departure times to suit any itinerary
- Interpretation handouts and safety cards in multiple languages (English, German, Portuguese, Chinese and Japanese)
- Complimentary tea and coffee
- Tour duration of two hours and fifteen minutes

Season

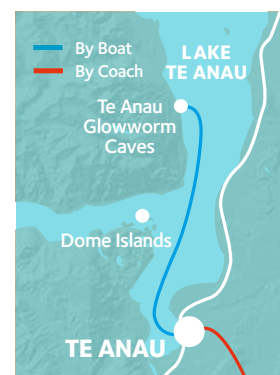
Departs - Returns

From Te Anau

Nov - March*	7.45am - 10am
Dec - Apr**	9am - 11.15am
All year	10.15am - 12.30pm
All Year	2pm - 4.15pm
Oct - Apr	4.30pm - 6.45pm
Oct - Apr	5.45pm - 8pm
All Year	7pm - 9.15pm
Oct - Apr	8.15pm - 10.30pm
Nov - Apr	9.30pm - 11.45pm

Coach transport available from Queenstown (full day). Check in 20mins prior to departure. *Combo available with Milford Sound Scenic Cruise.

**Note: Minimum numbers required.



MILFORD TRACK

Day Walk

Get a taste of one of the
'great walks of the world'!



Guided small group walk on the world famous Milford Track.

- An excellent 'taste' of the Milford Track for travellers short on time who want to experience this 'great walk of the world'
- Highlights include ancient beech forest, the Clinton River, grassy flats, wetlands and native birdlife
- Learn from the guide who explains the track's history and points out native flora and fauna
- Leisurely and scenic one hour cruise to the stunning northern tip of Lake Te Anau from Te Anau Downs
- Easy grade walking track (4-5 hours, 11 kilometres return)
- Take time to stop and enjoy the scenery and take photos
- Picnic lunch at Glade House included
- 12 walkers maximum per guide
- English only commentary (Japanese speaking guide available on request at extra cost)



Season	Departs - Returns
From Te Anau Coach + Walk	
Nov - 18 Apr	9.30am - 6pm
From Queenstown Coach + Walk	
Nov - 18 Apr	6.55am - 8pm

*Note: Track transport for independent walkers also available.
Check in 20mins prior to departure.*





TSS EARNSLAW

VINTAGE STEAMSHIP 1912

QUEENSTOWN Lake Cruises

Vintage steamship the TSS Earnslaw, launched in 1912, and Walter Peak High Country Farm give guests a taste of Queenstown's heritage.

- Cruise on board the iconic vintage steamship across beautiful Lake Wakatipu
- Soak up the sights of the awesome alpine scenery while cruising across to Walter Peak
- Take time to explore the vessel, view the engine room and the historic displays of the steamship's former life in the Fo'c'sle Gallery
- Piano sing-along with a New Zealand song book to take home
- Promenade Café with café food and licensed bar
- On board commentary and interpretation handouts in multiple languages (English, German, Spanish, Portuguese, Chinese, Korean and Japanese)



Relive the elegance of turn of the century travel with a scenic cruise on Queenstown's iconic vintage steamship. The TSS Earnslaw is believed to be the oldest working coal fired passenger steamship in the southern hemisphere. Cruising on the 'Lady of the Lake' is like stepping back in time. Below deck, the steam engines hiss and thud as the stokers shovel coal into the glowing fireboxes.

The TSS Earnslaw makes several trips daily across beautiful Lake Wakatipu to Walter Peak High Country Farm. On arrival, stay on board, or disembark to experience high country farming life and delicious dining options.



Design Features

- 1912 coal fired vintage steamship
- Two spacious viewing decks and bridge
- Design: Coal fired twin screw steamship
- Length: 51 metres
- Qualmark Enviro Gold rated recognising reduced emissions and greater energy efficiencies through coal burning techniques



Season	Departs - Returns
All Year*	10am - 11.30am
All Year*	12noon - 1.30pm
All Year*	2pm - 3.30pm
All Year*	4pm - 5.30pm
27 Dec - 29 Feb	6pm - 7.30pm
27 Dec - 29 Feb	8pm - 10pm

Check in 20mins prior to departure. 6pm & 8pm cruises available, minimum numbers apply.

Please allow extra time for parking in the CBD & to exchange vouchers for boarding passes.

**TSS Earnslaw will undergo annual maintenance during early June - early July 2020.*



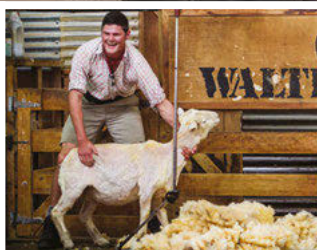
WALTER PEAK

HIGH COUNTRY FARM

WALTER PEAK Farm Tours

Situated on the picturesque shores of Lake Wakatipu, with a colonial homestead and stunning lakeside gardens, the farm is the perfect place to spend a relaxing few hours. Join our rural host for a walking tour of the farmyard, watch the working dogs in action or stop and smell the roses.

Your trip
includes:





WALTER PEAK FARM AMPHITHEATRE



- Scenic 45 minute cruise on board the TSS Earnslaw to Walter Peak High Country Farm
- Hosted walking tour of the farmyard to view and feed sheep, deer, cattle and alpacas
- Demonstrations of sheep dogs working, sheep shearing in the Amphitheatre
- Afternoon tea in the Woolshed including freshly baked scones and cookies
- Time to relax in the lakeside gardens, in the sunny courtyards or to wander the gift shop for a memorable souvenir
- English-only commentary and interpretation handouts in multiple languages (English, German, Spanish, Portuguese, Chinese, Korean and Japanese)

Season	Departs - Returns
All Year*	10am - 1.30pm 12noon - 3.30pm 2pm - 5.30pm
22 Jan - 31 Mar**	4pm - 7.30pm

Check in 20mins prior to departure. Please allow extra time for parking.

**TSS Earnslaw will undergo annual maintenance during early June - early July 2020.*

***Minimum numbers apply.*

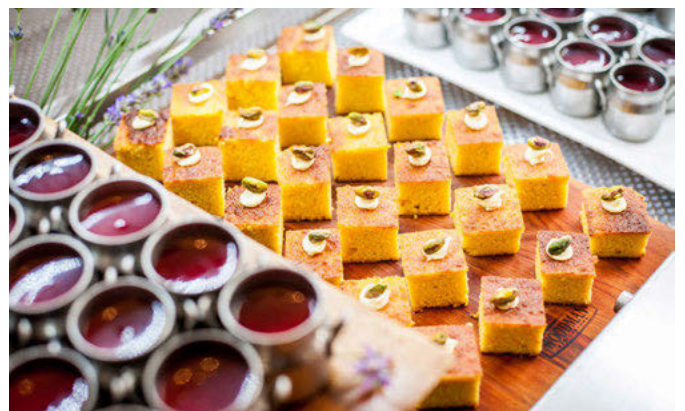
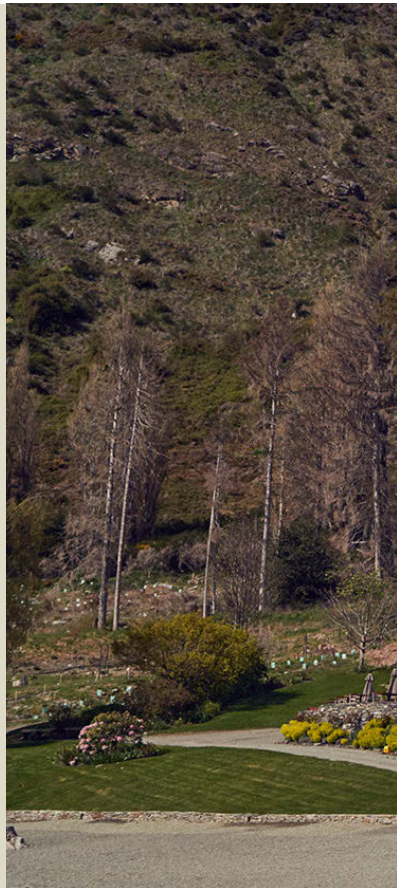


**COLONEL'S
HOMESTEAD**
RESTAURANT

WALTER PEAK

Lakeside Dining

Overlooking Lake Wakatipu and Queenstown's alpine scenery, the Colonel's Homestead at Walter Peak High Country Farm is the perfect place to spend a few hours. Its colonial architecture and sweeping grounds evoke the elegance of a bygone era.





Choose your trip



Season	Departs - Returns
Gourmet Barbecue Lunch	
All Year*	10am - 1.30pm 12noon - 3.30pm
Gourmet Barbecue Dinner	
27 Dec - 31 Mar**	4pm - 7.30pm
Oct - May	6pm - 10pm
Jun - Sep**	6pm - 10pm

Check in 20mins prior to departure. Please allow extra time for parking. *TSS Earnslaw will undergo annual maintenance during early June - early July 2020. **Minimum numbers apply.

Sample Gourmet BBQ Dinner Menu

Homemade Breads

Charcuterie platter – parma ham, salami, coppa, chorizo

Vegetarian tart of the day

Aoraki smoked salmon, Chioggia beetroot, herbs, radish & lemon wedges

Steamed South Atlantic prawns w/ nau cham sauce

Fennel, iceberg lettuce, pickled purple cauliflower, red radish & blue cheese w/ white balsamic dressing

Cardrona Merino lamb

Canterbury pork

Southland beef

Local Zamora sausages

East Coast market fish cooked a la Plancha

Steamed new potatoes w/ herbs, spices & smoked butter

Roast carrots & parsnips w/ rosemary, garlic confit & pomegranate dressing

Roast kumara, salt baked shallots, dried apricots, spring onion, shaved almonds, chives & French dressing

Walter Peak sticky date pudding

Classic tiramisu

Apple & rhubarb crumble

Callebaut dark chocolate mousse

A selection of NZ cheeses w/ quince paste, crackers & grapes

Note: Tea & coffee included for BBQ Dinner, espresso coffee available at BBQ Lunch. BBQ Lunch does not include seafood.





WALTER PEAK

HIGH COUNTRY FARM

WALTER PEAK

Horse Treks

Take in the sights in the most relaxing way possible. Meander through farmland at an easy pace to create a holiday highlight which last forever.

- Our experienced guide will take you on a horse trek across rolling high country farmland to a lookout offering spectacular views of Lake Wakatipu and the surrounding mountains (40 minutes)
- Return to the stables and enjoy a traditional morning or afternoon tea at the Colonel's Homestead
- Suitable for all abilities, including first time riders
- Minimum age seven years; maximum weight 100 kilograms, minimum height 120cm
- Small group, personalised experience (six per guide)

Season	Departs - Returns
Oct - Apr	10am - 1.30pm 12noon - 3.30pm 2pm - 5.30pm

Check in 20mins prior to departure. Departures weather dependent.



Getting to Stewart Island

Picturesque Stewart Island is well off the beaten track, but just 30 km from the southern tip of New Zealand's South Island.

Explore an untouched paradise

Most of the island's lush forest, rocky coastlines and creamy golden sand beaches are protected within the Rakiura National Park. Settlement is mainly confined to Oban, the only township on the island.



Ferry Services

Zip across Foveaux Strait between Bluff and Stewart Island aboard our comfortable catamarans. During the trip, keep an eye out along the way for wildlife – particularly seabirds such as the mollymawk and titi. Our friendly staff provide informative commentary and point out highlights.

- All-year daily scheduled ferry service
- Complimentary tea and coffee served on board
- One day return connection available

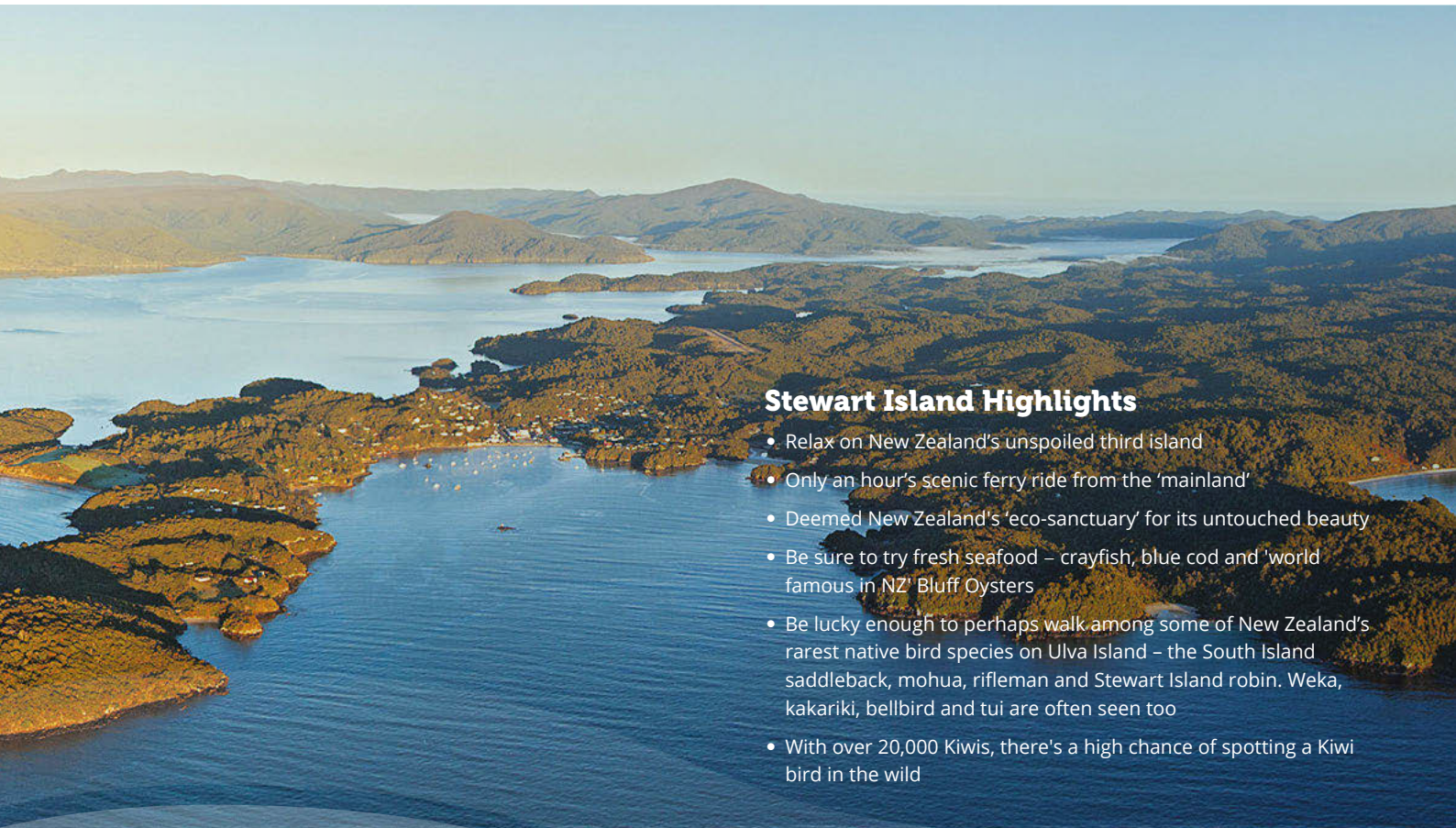


Foveaux Express

- Design: Catamaran
- Capacity: 97 passengers
- Length: 23 metres

Southern Express

- Design: Catamaran
- Capacity: 62 passengers
- Length: 19.5 metres



Stewart Island Highlights

- Relax on New Zealand's unspoiled third island
- Only an hour's scenic ferry ride from the 'mainland'
- Deemed New Zealand's 'eco-sanctuary' for its untouched beauty
- Be sure to try fresh seafood – crayfish, blue cod and 'world famous in NZ' Bluff Oysters
- Be lucky enough to perhaps walk among some of New Zealand's rarest native bird species on Ulva Island – the South Island saddleback, mohua, rifleman and Stewart Island robin. Weka, kakariki, bellbird and tui are often seen too
- With over 20,000 Kiwis, there's a high chance of spotting a Kiwi bird in the wild

Season	Departs
From Bluff Ferry Only	
All year	9.45am
Oct - Apr	11am
1 Dec - 28 Feb	1.30pm
May - Sep	4.30pm
Oct - Apr	5.15pm
From Stewart Island Ferry Only	
All year	8am
26 Dec - 7 Jan	9.30am
1 Dec - 28 Feb	12noon
May - Sep	3pm
Oct - Apr	3.30pm
Oct - Apr	5pm

Departures are sea condition dependent. Timetable subject to change.
Coach connections from Queenstown and Te Anau are available.

Rental Services

Taking the time to explore Stewart Island's secluded beaches and bush walks on your own is a rewarding experience. With less than 30 kilometres of sealed roads on the entire island there's minimal traffic and it's difficult to get lost.

Available for hire

-  Small cars
-  Motor scooters
-  Mountain bikes



Stewart Island Experience is part of the Real Journeys family.

Stewart Island Village & Bays Tours

Explore Oban village and its surrounding bays with a local guide. This is the best introduction to Stewart Island.

Unspoiled, incredibly beautiful and steeped in stories, Stewart Island is well worth this informative introduction. You will have plenty of time to get off the bus for photo stops and short walks along the way.

- An insight into life on Stewart Island by a local guide
- Discover the whaling history of the island and the integration of European, Maori and American cultures
- A walk to the gateway of Rakiura National Park at Lee Bay
- Take in the sights of beautiful Horseshoe Bay
- Stand atop Observation Rock with its stunning views of Golden Bay, Paterson Inlet and Ulva Island



Season	Departs - Returns
All Year	11am - 12.30pm
All Year	1pm - 2.30pm
Oct - Apr	4pm - 5.30pm

Check in 20mins prior to departure.



Guided Walks

Join a small group guided walk and immerse yourself in the sights and sounds of Stewart Island.

- Specialist Nature Guide points out native bird and plant life
- Learn about the work local residents are doing to preserve wildlife species
- Small group (eight per guide)

Season	Departs - Returns
--------	-------------------

Oct - Mar 4pm - 6pm

Note: Minimum age 14 years, and minimum numbers apply (four adults).

Check in 20mins prior to departure.



Ulva Island Explorer

Enjoy a leisurely cruise of beautiful Paterson Inlet, viewing unspoilt beaches, hidden coves, sealife and exploring the 'not-to-be-missed' Ulva Island Birdlife Sanctuary.

- Cruise on the modern and comfortable Rakiura Explorer into Paterson Inlet, past coastal beaches
- At Ulva Island enjoy a guided walk through the forest that is home to weka (native woodhen), bush robins, rare saddlebacks and yellowheads amongst other rare and endangered species. It is also a protected habitat for some of New Zealand's rarest plant species
- 45 minute guided bush walk included
- Local Nature Guide provides interesting commentary
- Keep a look out for sea birds, seals, fur seals and penguins
- Picnic lunches available (please pre-order)

Season	Departs - Returns
May & Sep	12noon - 2.45pm
Oct - Apr	12.45pm - 3.15pm

Check in 20mins prior to departure at the Red Shed.



Wild Kiwi Encounter

As daylight diminishes, venture into the forest by torchlight, with an experienced Nature Guide to spot the Southern Brown Kiwi.

At dusk, depart Halfmoon Bay by catamaran for a scenic cruise across Paterson Inlet to Little Glory Cove. During the cruise pass Ulva Island (a predator-free sanctuary) and learn about Stewart Island's rich history. Once at Little Glory Cove, follow the Nature Guide through the coastal forest to a secluded sandy beach. See the stars above and listen for the surrounding forest sounds. Here in the darkness keep an eye out for the Southern Brown Kiwi (Rakiura tokoeka) often seen searching for food.

- Presentation about the Southern Brown Kiwi prior to departure
- Cruise on a modern, comfortable catamaran
- Guided walk, led by an experienced Nature Guide, on a well-formed track
- Small group (eight per guide, max 16 per night)
- Duration: four hours (approx)
- Suitable for ages 15 years and over
- Complimentary tea and coffee on board

Season	Departs - Returns
Sept	5.30pm - 9.30pm
Oct	7pm - 11pm
Nov & Mar	7.30pm - 11.30pm
Dec - Feb	8.30pm - 12.30am
Apr	5pm - 9pm
May	4.30pm - 8.30pm

Departures weather dependent.





Stewart Island LODGE

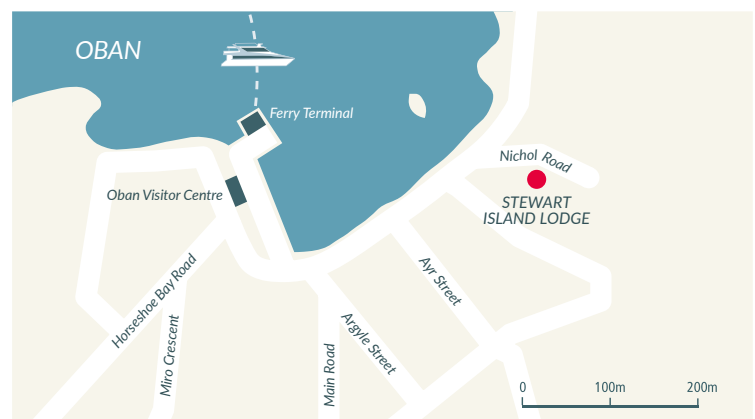
Located atop the hill, just five minutes walk from the village centre, the Lodge is private and secluded and commands the best views across Halfmoon Bay and Foveaux Strait.

The Lodge has extensive grounds, home to many native birds including kaka (native parrots), which may be viewed from the terrace. In the evening, the guest lounge or outdoor terrace provides the perfect place to relax and enjoy the views. Restaurants are available in the village for evening dining. A small kitchen is also available for guest use. Each morning a continental breakfast is served in the dining room.



Stewart Island is a haven for nature lovers, walkers and outdoor adventurers.

- » Six king or twin bedrooms, all with ensuites
- » Communal guest lounge with great views
- » Continental breakfast provisions included
- » Complimentary pick up and drop off from ferry or flight depot
- » TVs in all rooms
- » Tea/coffee making facilities available in-room



Stewart Island

Day & Multi-Day Packages

Stewart Island Day Trips

One Day *Self-drive ex Bluff*

9.45am Ferry from Bluff to Stewart Island.

11am Village and Bays tour.

Optional extras: Museum or DOC Visitor Centre visit

12.45pm Ulva Island Explorer tour including a guided walk.

3.30pm Ferry from Stewart Island to Bluff.

Inclusions: Return ferry, Village and Bays tour and Ulva Island Explorer tour.



Discover Stewart Island

Two day *Self-drive trip*

Day One

Self-drive to Bluff. There is secure outdoor vehicle parking available in Bluff adjacent to the ferry terminal (additional cost). Depart Bluff on the 11am ferry to Stewart Island arriving at 12noon and then take the 1pm Village and Bays Tour. Go kiwi spotting in the evening with the Wild Kiwi Encounter. Overnight accommodation included at Stewart Island Lodge.

Day Two

Morning is free for exploring the island at leisure (optional extra – explore by rental car, motor scooter or mountain bike). Take 12.45pm Ulva Island Explorer tour including a guided walk. Depart Stewart Island at 3.30pm by ferry to Bluff, arriving 4.30pm.

Inclusions: Return ferry, one night's accommodation at Stewart Island Lodge, Village and Bays tour, Wild Kiwi Encounter and Ulva Island Explorer tour.

Conditions: Suggested itineraries are based on Oct - Apr summer season. Schedule subject to change.

Explore Stewart Island

Three day *Self-drive or with coach connections ex Queenstown / Te Anau*

Day One

Take the 9.45am ferry departure to Stewart Island arriving 10.45am and then take the 1pm Village and Bays Tour. Overnight accommodation is included at Stewart Island Lodge.

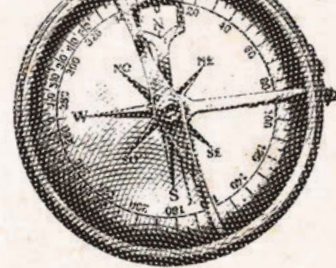
Day Two

Morning is free for exploring the island at leisure (optional extra – explore by rental car, motor scooter or mountain bike). At 12.45pm take the Ulva Island Explorer tour including a guided walk. Go kiwi spotting in the evening with the Wild Kiwi Encounter. Overnight accommodation is included at Stewart Island Lodge.

Day Three

Depart Stewart Island 3.30pm by ferry for 4.45pm onward transfer from Bluff (coach or self-drive) arriving Queenstown 8pm
OR
Departs Stewart Island 8am by ferry for 9.15am onward transfer from Bluff (coach or self-drive) arriving Te Anau 1.20pm.

Inclusions: Coach connections or self-drive, return ferry, two night's accommodation at Stewart Island Lodge, Village and Bays tour, Ulva Island Explorer tour and Wild Kiwi Encounter.



Discovery Expeditions

PRESERVATION INLET,
DUSKY SOUND OR
STEWART ISLAND



Kaka



*Humpback
Whale*

A multi-day Discovery Expedition takes you on an exploration of Fiordland or Stewart Island, delving into the rich natural and human histories of the regions. You get to reach out and touch the stunning landscapes with opportunities to disembark and explore relics of settlements long past.

All Discovery Expeditions have on-board specialist Nature Guides, who are experts on southern New Zealand, providing an informative commentary, spotting wildlife and taking guided walks and activities.

Passenger numbers are limited to 32 creating a friendly and relaxed atmosphere on board the purpose built Milford Wanderer. With sumptuous meals and an attentive crew, all your needs are looked after against an awe-inspiring backdrop.

Discovery Expeditions attract people of all ages. An average level of fitness is recommended along with a love of the outdoors and a sense of adventure.

PRESERVATION INLET

SIX NIGHTS / SEVEN DAYS

Departs from Manapouri in Apr, May, Jul, Aug & Sep

DUSKY SOUND

FOUR NIGHTS / FIVE DAYS

Departs from Manapouri in Oct

STEWART ISLAND

FIVE NIGHTS / SIX DAYS

Departs from Bluff in Jul

Coach transport from Queenstown, Te Anau and Invercargill to departure locations are available.

DISCOVER FIORDLAND

DUSKY SOUND

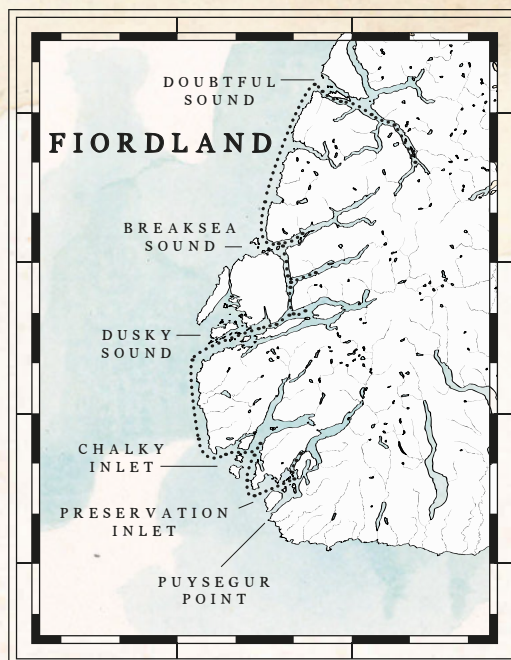
Four night cruise with helicopter transfer options

With more than 350 islands, Dusky and Breaksea Sounds offer many idyllic spots for mooring, kayaking and trips ashore. This cruise will also take you to Doubtful Sound, well known for its wildlife, including fur seals and a resident pod of bottlenose dolphins.

PRESERVATION INLET

Six night cruise with helicopter transfer options

Preservation and Chalky Inlets are New Zealand's southernmost and seldom visited fiords. The windswept coastlines and broad beaches allow excellent opportunities for landing and exploration. These cruises encompass the highlights of the Dusky Sound trip and can include Breaksea and Doubtful Sounds.

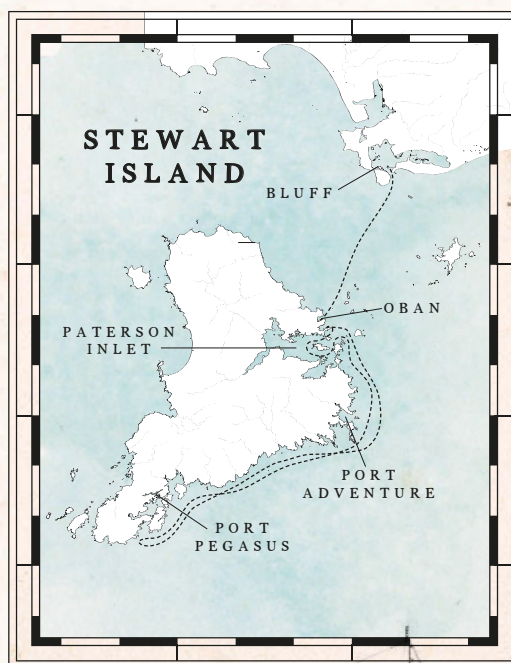


DISCOVER STEWART ISLAND

Five night cruise

New Zealand's third and southernmost island is a wonderful destination for people who value nature and wild places. Most of Stewart Island is part of the Rakiura National Park with settlement mainly confined to Oban, the only township. The island's densely forested hills, tiny population and untouched coastline of rocky outcrops and creamy golden sand beaches make it a natural refuge for marine and bird life and an ideal destination to explore by boat.

Your journey starts with a cruise across Foveaux Strait from Bluff to Stewart Island's eastern shoreline. There you'll board the Milford Wanderer and spend the next several days cruising some of the most magical waters in New Zealand. Venture ashore regularly for guided walks – including the renowned Ulva Island bird sanctuary – and visit historic sites such as the old Norwegian whaling station at Prices Inlet.

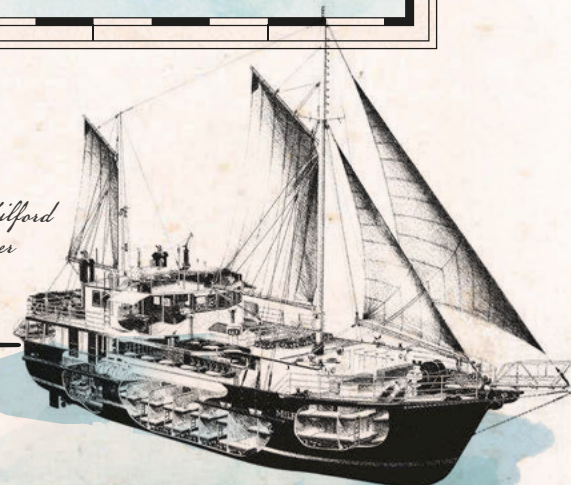


MILFORD WANDERER

Specialist Nature Guides / Kayaks and small boats available
Open bridge policy / Sleeps 32 / Warm, comfortable cabins (twin share / double) / Duvets, sheets and towels provided / Modern bathroom facilities with hot showers / Cosy dining saloon / Hearty meals prepared by your onboard chef

Visit www.discoveryexpeditions.co.nz
for full cruise routes and departure dates.

The Milford Wanderer



Conservation

Last year, we contributed over \$500,000 in direct and in-kind support towards a variety of conservation projects that support vulnerable species, restore habitats, and remove predators – as well as 'giving back' to our local communities.



Cooper Island Restoration Project

- Real Journeys is helping provide safe habitat for endangered native birds by eliminating stoats and rats from Cooper Island, the third largest island in remote Dusky Sound
- Under the guidance of the Department of Conservation, it is the first time predator control has been attempted on the island
- Over 1,300 traps are being placed across 1,778 hectares – a \$500,000 long-term commitment by Real Journeys
- After three years of intensive work, ongoing maintenance will be funded via a \$100 contribution from every Discovery Expedition ticket

Award-winning Walter Peak Land Restoration Project

- Over 15,000 native shrubs and trees have been planted as we continue to restore Walter Peak High Country Farm to its true high country heritage
- Invasive wilding pines that had spread across the 155 hectare farm were logged and removed, to stop them from infesting the iconic Lake Wakatipu landscape (only possible once Real Journeys had purchased the land in 2014)
- Wilding pines are considered a major threat to the South Island high country's ecosystem, competing with native plants for sunlight and water and degrading the natural landscape
- The project was recognised by a special Certificate of Appreciation award from the Department of Conservation which described it as an "ambitious project that required significant expense"

Cruise-for-a-Cause

- Our annual Cruise-for-a-Cause has raised more than \$150,000 for charities and conservation since 2015
- At the start of each season, Real Journeys dedicates the crew's final overnight training cruise in Milford Sound and Doubtful Sound as a fundraiser for two organisations selected for their 'good cause'
- The vessel, crew, dinner, breakfast and water activities are provided at no cost and 100% of the ticket price goes to the good cause
- Previous recipients include the Yellow-eyed Penguin Trust, Forest & Bird and the Cancer Society (Southland and Otago Region)

Birds of a Feather Conservation Ball

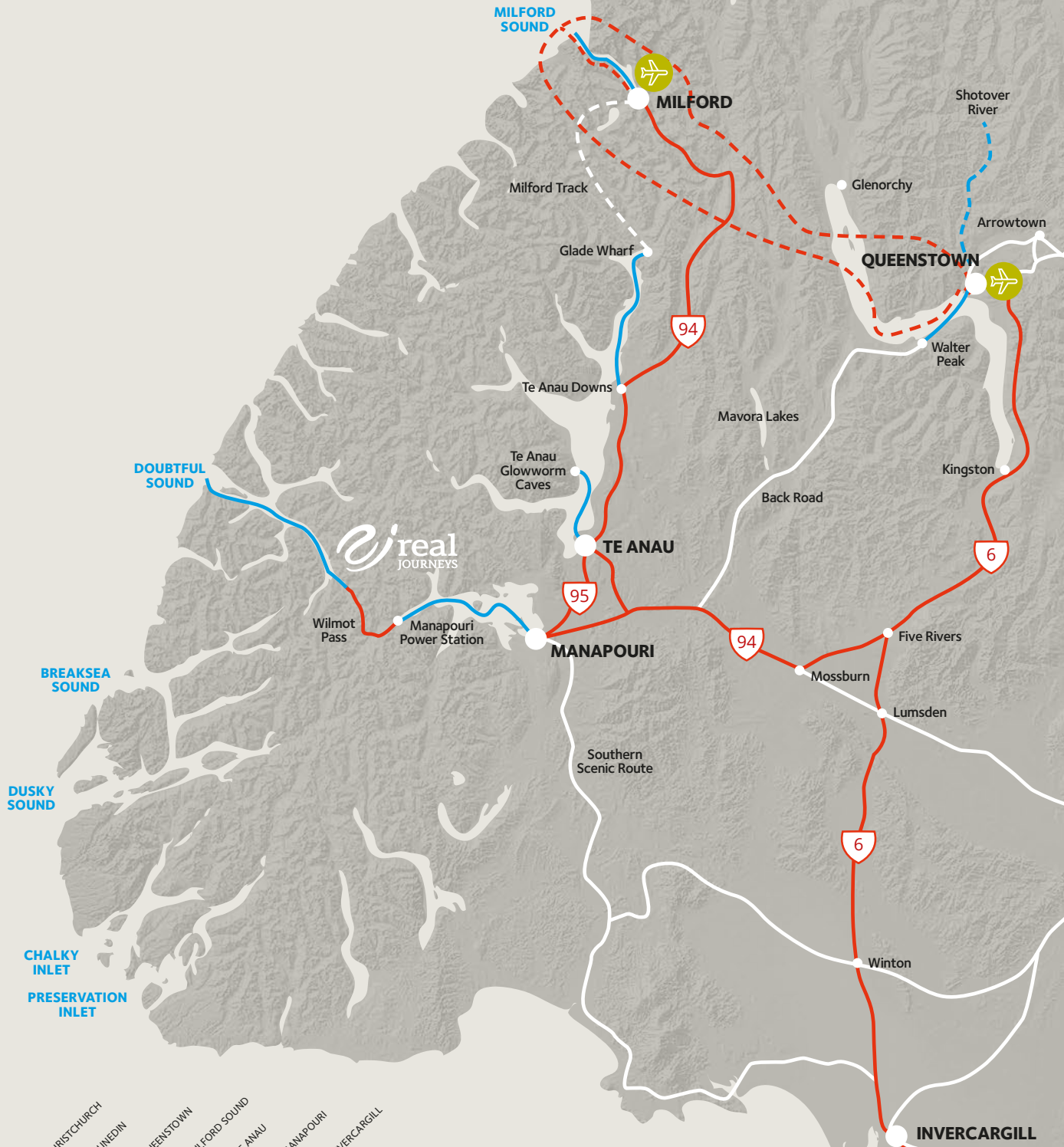
- One of Queenstown's most anticipated black-tie dinner events, our Birds of a Feather Conservation Ball has raised almost \$300,000 for conservation since it began in 2015
- Real Journeys picks up the tab for the exclusive evening so that 100% of the ticket price goes directly to conservation
- Previous recipients include Kākāpō Recovery, the Cooper Island Restoration Project and Wakatipu Wildlife Trust

Endangered birds

- For the last 12 years we have funded the relocation of rare native whio (blue duck) to help boost breeding stock. We have also helped fund monitoring work for the little spotted kiwi on Chalky Island, Fiordland, and our overnight cruise and caves staff set and rebait lines of predator traps.

For more information visit realjourneys.co.nz/conservation





	CHRISTCHURCH	DUNEDIN	QUEENSTOWN	MILFORD SOUND	TE ANAU	MANAPOURI	INVERCARGILL
BLUFF	609	247	217	308	182	183	30
INVERCARGILL	8h40	3h30	3h05	4h25	2h35	2h35	25m
MANAPOURI	579	217	187	278	152	153	
TE ANAU	8h15	3h05	2h40	4h	2h10	2h10	
MILFORD SOUND	653	291	171	142	21		
QUEENSTOWN	9h15	4h05	2h25	2h	20m		
DUNEDIN	652	290	170	121			
	9h20	4h10	2h25	2h30			
	773	411	291				
	11h05	5h50					
	486	283					
	6h55	4h05					
	362						
	5h10						

BASIS: The times and distances are calculated for a driver travelling at 80/100km/hr on open roads. The above are approximate. Your time may vary. Please allow extra time for photos, short walks, rest stops and road conditions.

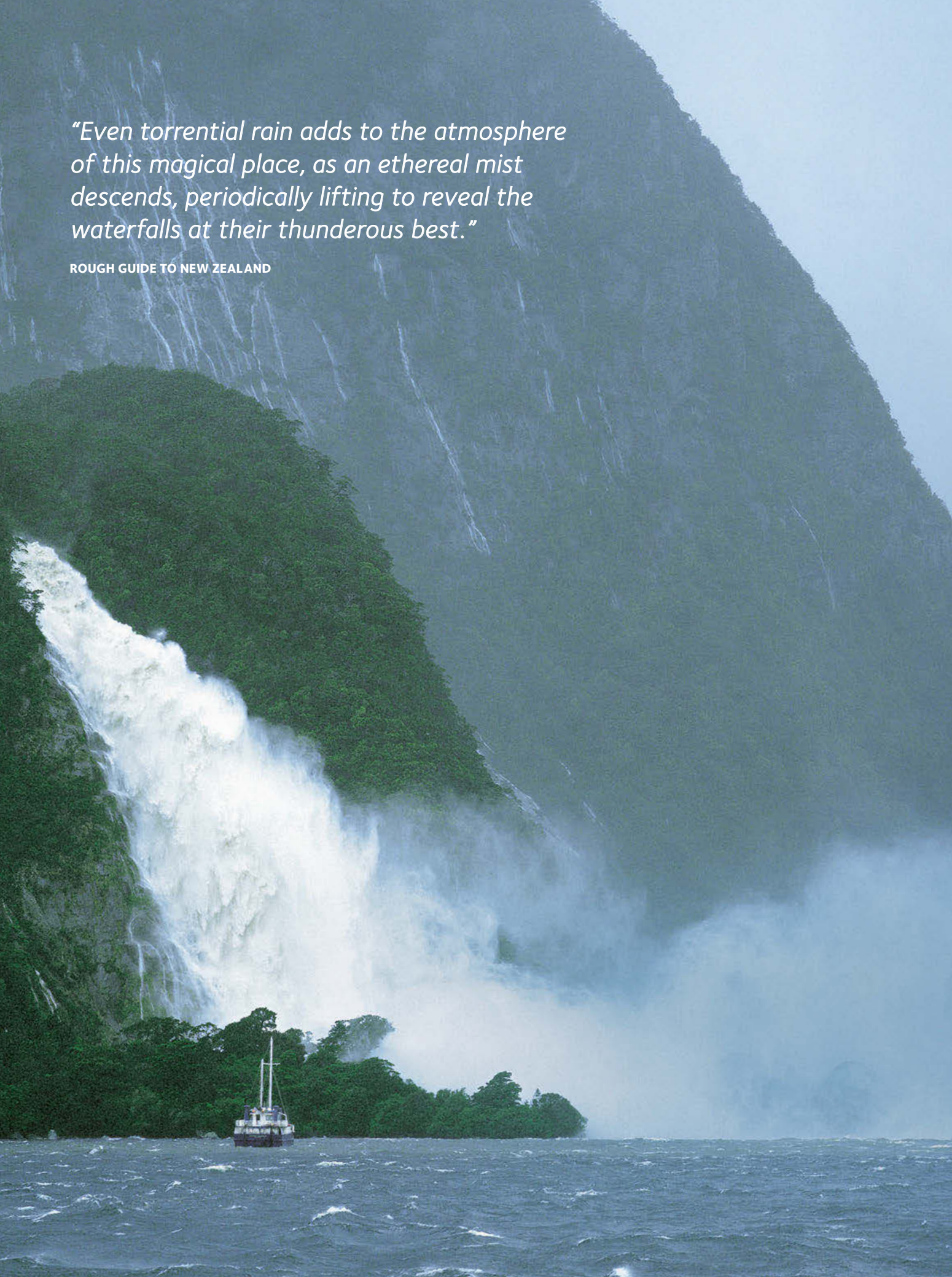
Routes are indicative only

- By Coach
- By Boat
- - - By Plane
- - - Rafting

Routes are indicative only

"Even torrential rain adds to the atmosphere of this magical place, as an ethereal mist descends, periodically lifting to reveal the waterfalls at their thunderous best."

ROUGH GUIDE TO NEW ZEALAND



Real Journeys is part of the Wayfare group of tourism companies including Cardrona, Go Orange and the International Antarctic Centre. All sales and reservations are handled by the Wayfare team on the below:



General enquiries

Contact	Wayfare Group Sales Division
Postal Address	PO Box 94, Queenstown 9348, New Zealand
Phone	+64 441 2400
Email	sales@wayfare.nz

Reservations

Contact	Wayfare Group Reservations
Freephone	0800 346 737 (wholesale agents, within NZ)
Phone	+64 3 249 8630
Email	reservations@wayfare.nz groups@wayfare.nz

www.wayfare.nz

Real Journeys reserves the right to amend timetables, cancel departures, substitute plant or equipment and alter ticket prices at any time. See our website for full booking terms and conditions including our cancellation policy.



Check us out on:



Printed in New Zealand using environmentally friendly inks and paper