



Walter Peak

High Country Farm

QUEENSTOWN, NEW ZEALAND



TSS Earnslaw

Vintage Steamship

QUEENSTOWN, NEW ZEALAND





WELCOME

No trip to Queenstown is complete without a cruise on the TSS Earnslaw Vintage Steamship.

The 'Lady of the Lake' makes several trips daily across Lake Wakatipu to Walter Peak High Country Farm on the western shores. Upon reaching Walter Peak, stay on board for a return cruise or you can disembark to get an insight into the high country farming lifestyle. Join a farm tour, go horse trekking or venture further afield on our guided cycling or electric farm bike tours. At the Colonel's Homestead Restaurant enjoy a gourmet barbecue lunch or dinner prepared fresh before your eyes on our outdoor grill.

Queenstown's Heritage	02
TSS Earnslaw Cruises	04
Walter Peak Map	06
Colonel's Homestead Restaurant	08
Walter Peak Farm Tours	10
Walter Peak Guided Cycling	12
Walter Peak Horse Treks	14
Promotions	15
Walter Peak Restoration Project	16
Contact Us	17

Queenstown's Heritage

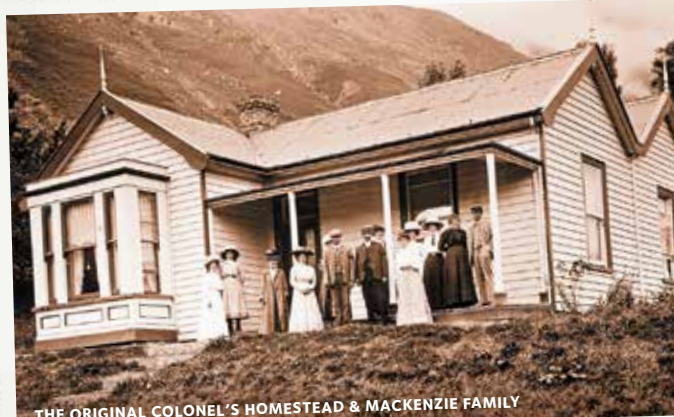
Launched by New Zealand Rail in 1912, the TSS Earnslaw is the last surviving and grandest steamship to have ever graced Lake Wakatipu.



Named after Mount Earnslaw (the highest peak in the region), she is 168 feet in length, 24 feet across the beam and weighs 330 tonnes. Originally built by J McGregor & Co in Dunedin at a cost of £20,850, the TSS Earnslaw was dismantled and transported by rail to Kingston at the lake's southern tip for reassembly and launching.

The TSS Earnslaw has since served the remote farming communities around Lake Wakatipu, including the original Walter Peak Station. Her working roles have included: cargo ship, livestock carrier, passenger transporter and pleasure steamer.

The TSS Earnslaw Vintage Steamship and Walter Peak High Country Farm are a much-loved part of Queenstown's history.



Walter Peak High Country Farm, on the western shores of Lake Wakatipu, is steeped in history.

Its sheltered bays were used as camping sites by Maori travelling to the Mararoa and Oreti Rivers on moa hunting and pounamu (greenstone) gathering expeditions. European settlement commenced in the 1860s with initial farming attempts by Von Tunzelman. Stock deaths, snowstorms and lack of money eventually forced him off the land.

Following a quick succession of owners, Walter Peak Station was taken over in the late 1880s by the Mackenzies. This family is credited with developing many of the principles of successful high country farming during their 80 years working the property.

At its peak, the station was one of New Zealand's most famous with 170,000 acres, 40,000 sheep and up to 50 full-time employees. The original homestead block of Walter Peak Station is now known as Walter Peak High Country Farm.

Over time various permanent homes were established and these included the Colonel's Homestead with its beautiful lakeside gardens. Originally built in 1902, it was carefully reconstructed in 1977 following an accidental fire.

Today, the TSS Earnslaw Vintage Steamship and Walter Peak High Country Farm welcome visitors from around the world.



QUEENSTOWN

Lake Cruises

🕒 1hr 30min duration



kids
go
free
SEE PAGE 15

A trip on the 'lady of the lake' is one of Queenstown's most iconic experiences.

This leisurely 90 minute return cruise across Lake Wakatipu showcases some of Queenstown's spectacular alpine scenery whilst offering you plenty of time to explore a piece of living history. Today, she is believed to be the oldest working coal-fired steamship in the southern hemisphere.

Kids and big kids alike can explore her decks, the engine room, viewing platform and the Captain's wheelhouse. Feel the heat of the giant steam engines at work as you watch the stokers shovel coal into the glowing fireboxes.

On the lower deck discover a mini museum, the Fo'c'sle gallery, where you can view a collection of historic photos of the vessel's colourful past. Or if you'd prefer, enjoy a drink or something to eat from the Promenade Café and Bar on board. On the return journey a sing-along with the pianist is a guaranteed bit of fun!



Departs - Returns

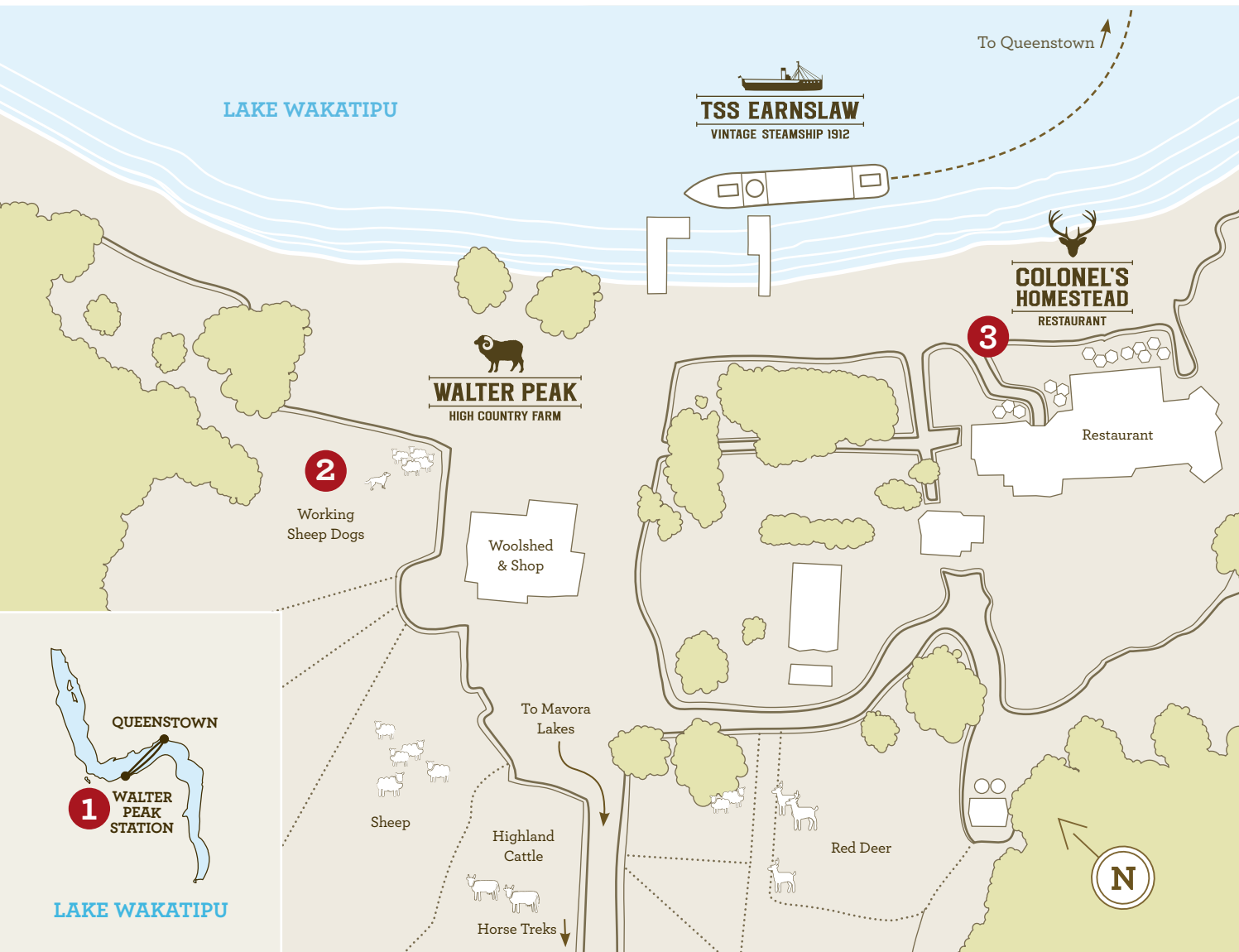
Season

10am - 11.30am
12noon - 1.30pm
2pm - 3.30pm
4pm - 5.30pm

All Year*

6pm & 8pm cruises available, minimum numbers apply.

**TSS Earnslaw will undergo annual maintenance during mid May - late June 2017.*





**COLONEL'S
HOMESTEAD**

RESTAURANT

WALTER PEAK

Lakeside Dining

🕒 3hrs 30mins duration

The Colonel's Homestead at Walter Peak High Country Farm offers a unique dining experience. Its colonial architecture and sweeping grounds evoke the elegance of a bygone era.

- Gourmet BBQ Lunch or Dinner, buffet style
- Watch our chef cook fresh or on the outdoor grill
- Exclusive lakeside setting unlike any other at the Colonel's Homestead Restaurant
- 45 minute cruise each way on board the TSS Earnslaw across beautiful Lake Wakatipu included



Sample Gourmet BBQ Buffet Dinner Menu

Salads

Baby spinach with lentils, hazelnuts, pomegranate & feta

Quinoa with red beans, kale, chilli, seeds & herbs

New potato salad with spring onions, capers, parsley & eggs

Cold Seafood

Home cured Stewart Island salmon with fennel, capers & chives

Cloudy Bay clams with chilli, spring onions, soy & coriander

Steamed prawns with lemon, chilli, garlic & parsley

Vegetables

Herb crusted butternut squash

Buttered potatoes with chives

Seasonal greens with almonds & lemon

Outdoor Grill

Spice rubbed chicken

Slow roasted pork belly

Cardrona lamb

Local Zamora sausage

Southland beef

Grilled sardines

Grilled vegetables with truffles & thyme

Desserts

Crème brulee, Panna cotta, Sticky date pudding, Vanilla ice cream, Banoffee pie, Chocolate mousse, A selection of tarts & cakes

NZ Cheeses &

Antipasto Selection

Departs - Returns

Season

Gourmet Barbecue Lunch

10am - 1.30pm

12noon - 3.30pm

All Year*

Gourmet Barbecue Dinner

6pm - 10pm

Nov - May*

Jun - Sep (*Minimum numbers apply*)

*TSS Earnslaw will undergo annual maintenance during mid May - late June 2017, a launch will substitute during this time for dining experiences.



WALTER PEAK
HIGH COUNTRY FARM

WALTER PEAK Farm Tours

🕒 3hrs 30min duration

Get a taste of New Zealand's farming lifestyle – the perfect place to spend a relaxing few hours.

Join our rural host for a walking tour of Walter Peak's farmyard. Get up close to sheep, deer and Highland Cattle. Morning or afternoon tea at the Colonel's Homestead Restaurant is also included – a great family day out.

- Help feed the farm animals
- See the dogs round up the sheep
- Watch a sheep shearing demonstration
- Time for a stroll in the lakeside gardens
- Delicious morning or afternoon tea at the Colonel's Homestead
- Return TSS Earnslaw Cruise



**kids
go
free**
SEE PAGE 15



Departs - Returns

Season

10am - 1.30pm

12noon - 3.30pm

2pm - 5.30pm

All Year*

**TSS Earnslaw will undergo annual maintenance during mid May - late June 2017, a launch will substitute during this time.*

WALTER PEAK

Guided Cycling

🕒 7hrs 30min duration

Join our small group cycling adventure on the south-western shores of Lake Wakatipu.

At Walter Peak your experienced guide will be waiting to drive you to Mavora Lakes. Cycle along a quiet country road through beech forest and open tussock grasslands.

Along the way enjoy stunning views of the Von River, surrounding mountains and snow-covered Mount Earnslaw at the head of Lake Wakatipu.

Lunch at a traditional musterers' hut and other cycling breaks provide great photo opportunities.



- Small groups (nine per guide)
- Quality mountain bikes and safety helmets provided
- Picnic lunch, hot drinks and afternoon tea included
- A support vehicle means you can ride as little or as much as you want
- Return TSS Earnslaw lake cruise included

Departs - Returns	Season
Guided Cycling	
10am - 5.30pm	Nov - Apr

Moderate level of fitness is required, 3 - 4hrs leisurely cycling (15 - 35km) with accompanying van transport if required.
Suitable for ages 10 years or minimum height 150cms.

Walter Peak Guided Cycling is operated jointly by Real Journeys and Around the Mountain Cycle Tours Ltd.

Independent Cycling

Grab your bike, and explore the serene beauty of the Wakatipu Basin at your own pace.

- A map, and snack / drink voucher is included, for redemption on the TSS Earnslaw
- Quiet country road through mostly gentle rolling terrain

Suitable for experienced cyclists. Contact us for timetable information.

New for this
SUMMER SEASON

Guided Electric Farm Bike Tours

at Walter Peak High Country Farm. Ask us for details.

WALTER PEAK

Horse Treks

🕒 3hrs 30min duration

Trek across beautiful rolling terraces with spectacular views of Lake Wakatipu and the surrounding mountains.

For added adventure, join a 40 minute guided horse trek taking you across beautiful rolling terraces to a lookout with spectacular views of Lake Wakatipu and the surrounding mountains.

- Small groups (six per guide)
- 40 minutes of easy horse riding
- Delicious morning or afternoon tea included at the Colonel's Homestead Restaurant
- Return TSS Earnslaw lake cruise included

Departs - Returns

Season

10am - 1.30pm

12noon - 3.30pm

2pm - 5.30pm

Nov - Apr

Suitable for all abilities, even first time riders, aged 7 years or minimum height 120cm, maximum weight of 100kg. Safety helmets and wet weather clothing provided.



kids
go
free

During all New Zealand
school holidays kids go free
on selected departures!

www.realjourneys.co.nz/kidsgofree

Terms & conditions apply, please see our website for details.

20%
multi
saver

Save 20% off all lower priced trips
when you buy two or more different
full priced trips at the same time

Terms & conditions apply, please see our website for details.

WALTER PEAK

Restoration Project

In 2014, Real Journeys embarked on a major conservation project after buying the land around the Colonel's Homestead that makes up Walter Peak Farm.

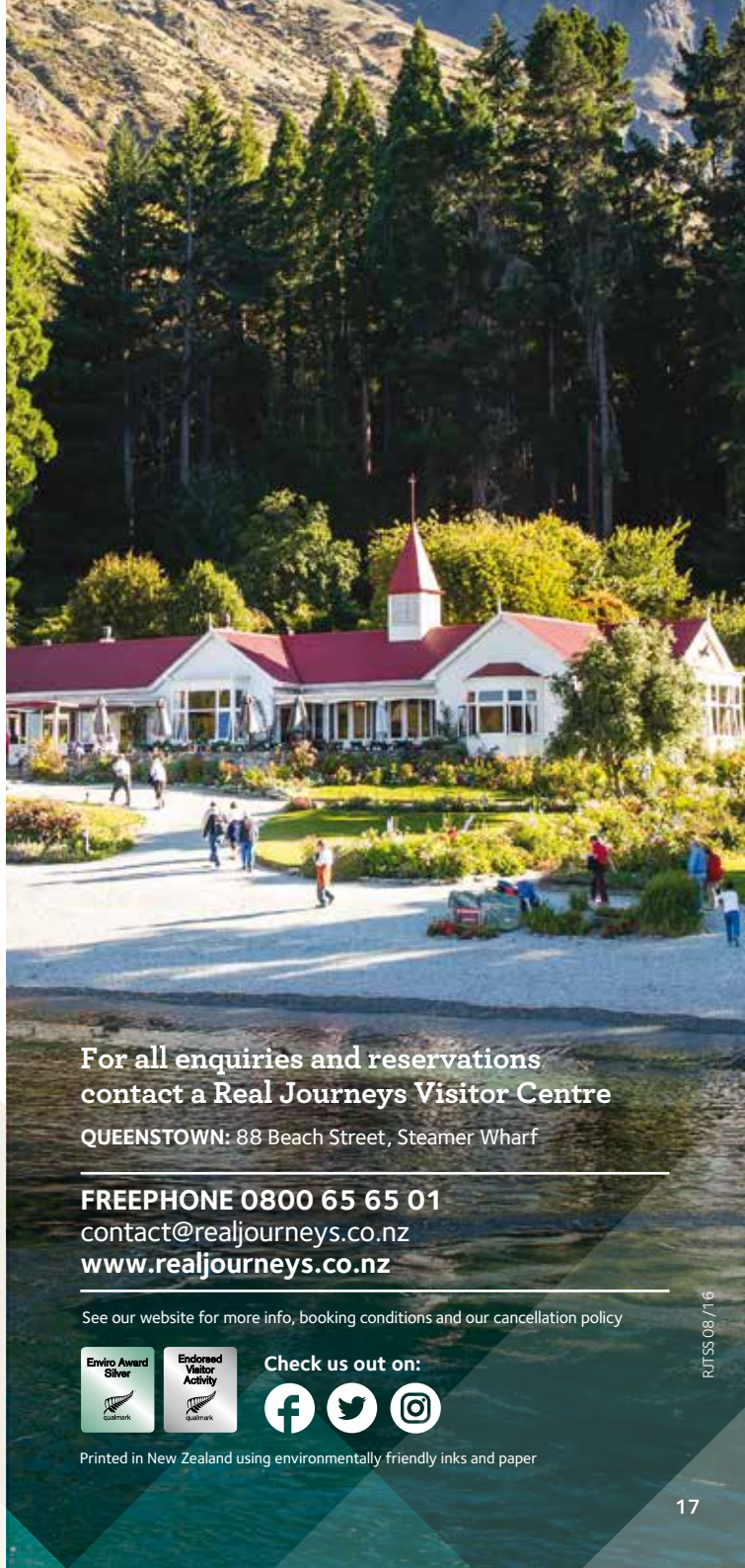
The company began clearing its land (155 hectares) of the invasive non-native trees and weeds that have been spreading rapidly across Walter Peak and the surrounding Central Otago landscape. Pockets of native bush are being planted and a public walkway created along the foreshore to the stunning area of Beach Point.

What we've taken out at Walter Peak

The Wilding Douglas Fir, Gorse, Broom and other pests.

What we're bringing back

A unique environment, a way of life and a sense of adventure. Now the pines are removed the most spectacular lakeside land is being replanted and transformed with pockets of native bush, walking and bike trails. A picnic and BBQ area have been developed and other spots returned to pastoral farming use.



**For all enquiries and reservations
contact a Real Journeys Visitor Centre**

QUEENSTOWN: 88 Beach Street, Steamer Wharf

FREEPHONE 0800 65 65 01

contact@realjourneys.co.nz

www.realjourneys.co.nz

See our website for more info, booking conditions and our cancellation policy



Check us out on:



Printed in New Zealand using environmentally friendly inks and paper